

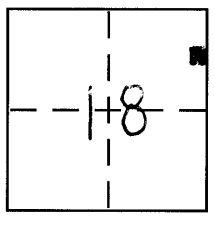
CORNER RECORD

Document Number 258-A, 274 & 2041

City of _____

County of MERCED, California

Brief Legal Description Parcel 1 22 p.m. 19 M.C.R.



CORNER TYPE

Government Corner Control
Meander Property
Rancho Other
Date of Survey 1/8/09

COORDINATES (Optional)

N. _____
E. _____
Zone _____ NAD27 NAD83
NAD83 Epoch _____
Elev. _____
Vert. Datum: NGVD29 NAVD88
Meas. Units: Metric Imperial

Corner - Left as found Found and tagged Established Reestablished Rebuilt

Identification and type of corner found: Evidence used to identify or procedure used to establish or reestablish the corner:

SEE SKETCH

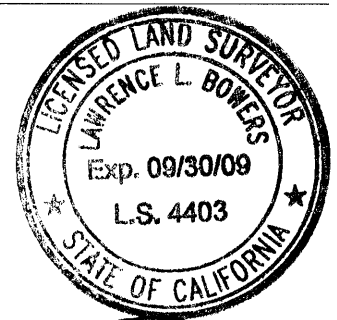
A description of the physical condition of the monument as found and as set or reset:

SEE SKETCH

SURVEYOR'S STATEMENT

This Corner Record was prepared by me or under my direction in conformance with the Land Surveyor's Act on January 29, 2009

Signed [Signature] P.L.S or R.C.E. No. _____



COUNTY SURVEYOR'S STATEMENT

This Corner Record was received January 30, 2009

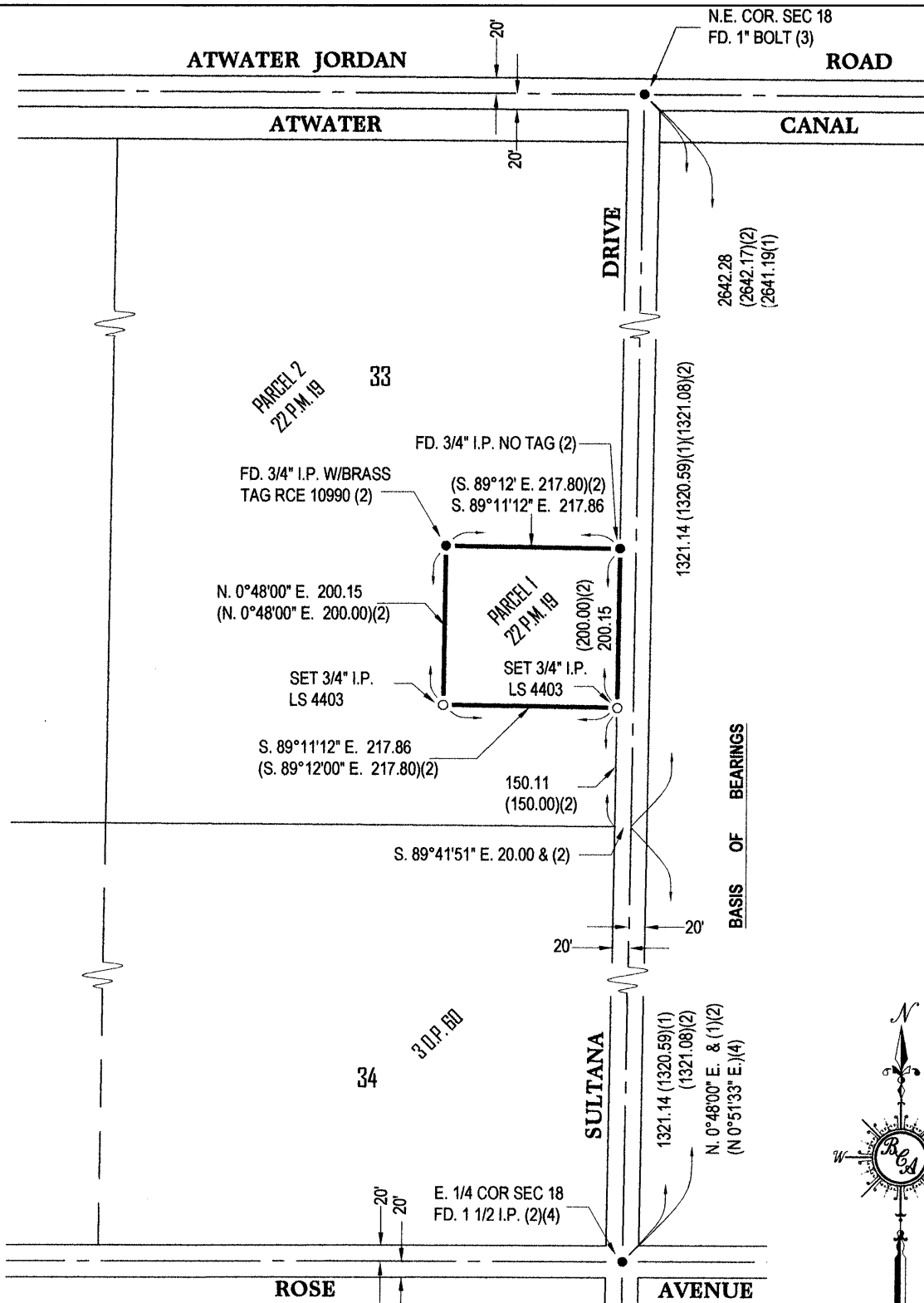
and examined and filed February 2, 2009

Signed [Signature] P.L.S or R.C.E. No. 4895

Title Dep. County Surveyor



County Surveyor's Comment _____



BASIS OF BEARINGS
 N. 0°48'00" E. FOR THE CENTERLINE OF
 SULTANA DRIVE AS SHOWN ON THE MAP OF
 JORDAN ATWATER TRACT 3 O.P. 60 M.C.R.

- REFERENCE:**
1. MAP OF JORDAN ATWATER TRACT, 3 O.P. 60 M.C.R.
 2. PARCEL MAP FOR FLORENCE DOLES, 22 P.M. 19 M.C.R.
 3. PARCEL MAP FOR CLAUDE JANTZ, 14 P.M. 44 M.C.R.
 4. PARCEL MAP FOR HARRY P. BORCHERDING, 32 P.M. 48 M.C.R.

