

CORNER RECORD

DPD-3011A (Rev. 3/98) CT# 7541-4554-2

Document Number 272

City of _____

County of Merced, California

Brief Legal Description Northeast corner of Section 20, T7S, R12E, MDB & M. White Crane Road at Cressey Way



CORNER TYPE

COORDINATES(Optional)

Government Corner Control
Meander Property
Rancho Other

N. _____
E. _____
Zone _____ NAD27 NAD83
NAD83 Epoch _____
Elevation _____
Vert. Datum: NGVD29 NAV88
Meas. Units: Metric Imperial

Date of Survey June 3, 2000

Corner - Left as found Found and tagged Established Reestablished Rebuilt

Identification and type of corner found: Evidence used to identify or procedure used to establish or reestablish the corner:

Found 1" iron pipe, down 0.5 feet, with yellow cap. Tag illegible.

Pipe found with remaining County ties.

A description of the physical condition of the monument as found and as set or reset:

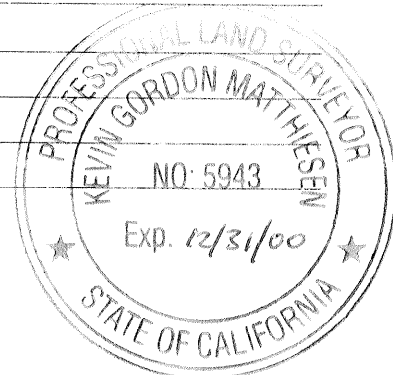
Left as found. Remeasured new ties. (See page 2)

SURVEYOR'S STATEMENT

This Corner Record was prepared by me or under my direction in conformance with

the Land Surveyor's Act on June 15, 2000

Signed Kevin Gordon Matthesen P.L.S. Number 5943 - Expires 12/31/00
For the State of California
Department of Transportation



COUNTY SURVEYOR'S STATEMENT

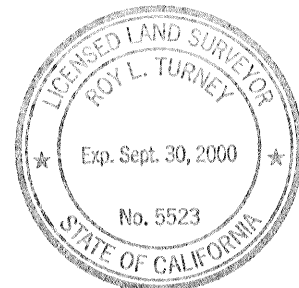
This Corner Record was received JULY 3, 2000 and examined

and filed JULY 21, 2000

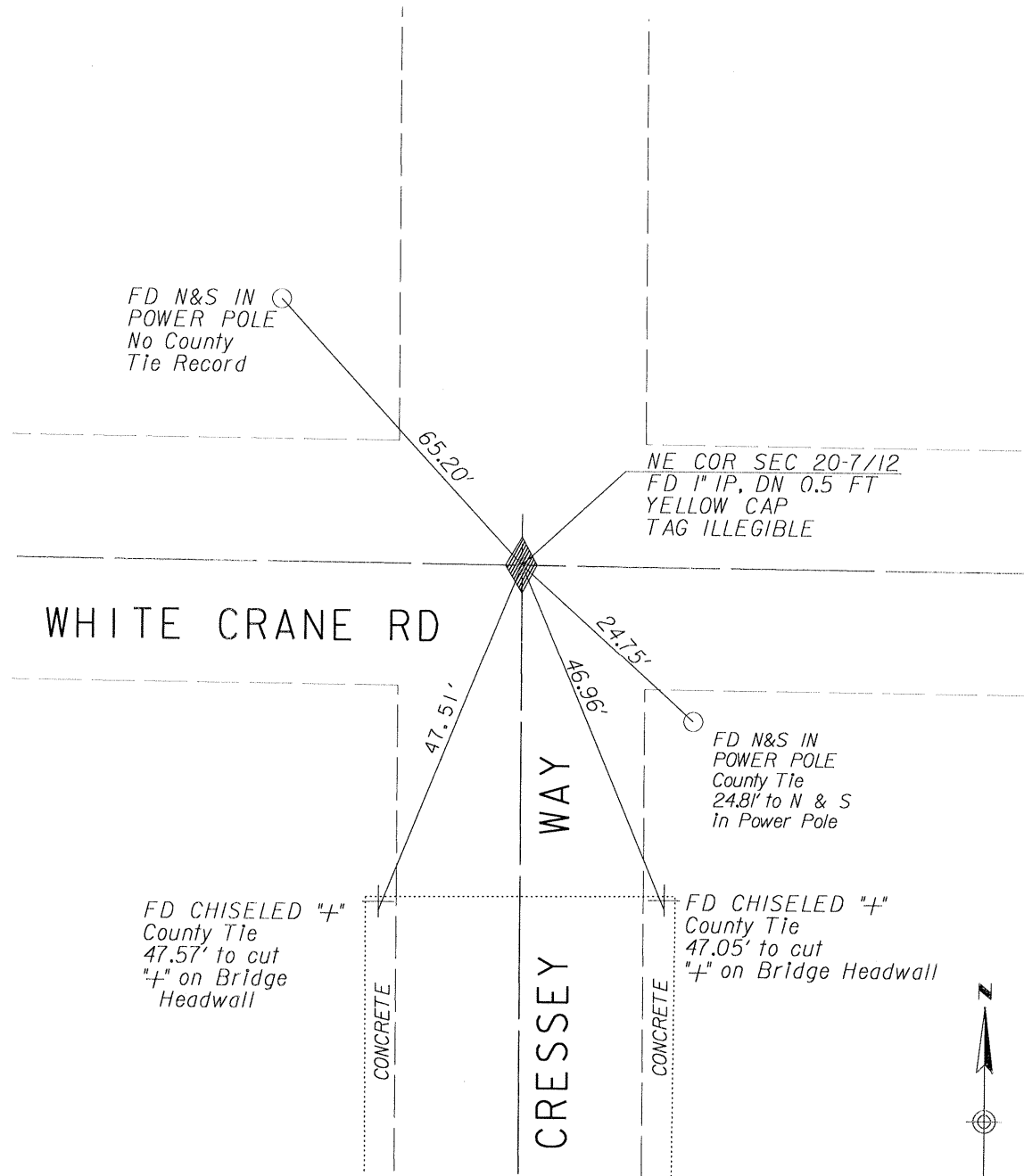
Signed Roy L. Turney P.L.S. or P.C.E. Number 5523

Title DEP. CO. SURVEYOR

County Surveyor's Comment _____



NORTHEAST CORNER SECTION 20 T7S, R12E, M. D. B. & M.



NO SCALE