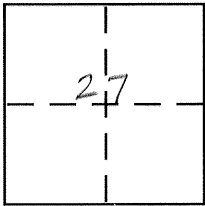


CORNER RECORD

Document Number 247 D

City of _____ County of Merced, California

Brief Legal Description Portion lot 14, Livingston Land & Colony Co.



CORNER TYPE

Government Corner Control
 Meander Property
 Rancho Other
 Date of Survey 4-14-05

COORDINATES (Optional)

N. _____
 E. _____
 Zone _____ NAD27 NAD83
 NAD83 Epoch _____
 Elev. _____
 Vert. Datum: NGVD29 NAVD88
 Meas. Units: Metric Imperial

Corner - Left as found Found and tagged Established Reestablished Rebuilt

Identification and type of corner found: Evidence used to identify or procedure used to establish or reestablish the corner:

See sketch

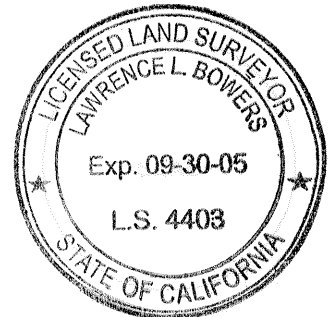
A description of the physical condition of the monument as found and as set or reset:

See sketch

SURVEYOR'S STATEMENT

This Corner Record was prepared by me or under my direction in conformance with the Land Surveyor's Act on May 31 2005.

Signed [Signature] P.L.S or R.C.E. No. _____



COUNTY SURVEYOR'S STATEMENT

This Corner Record was received June 1, 2005

and examined and filed June 2, 2005

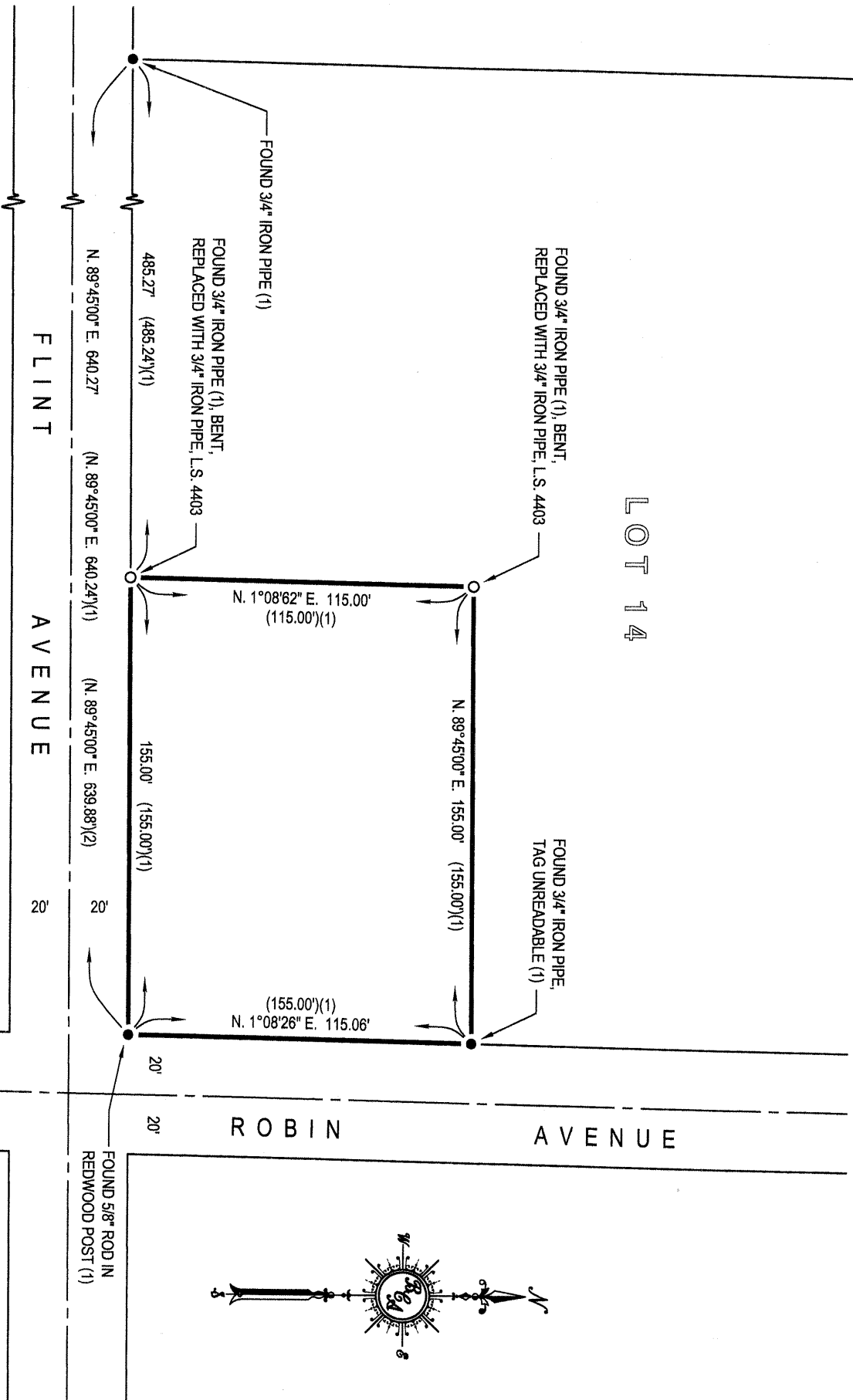
Signed [Signature] P.L.S or R.C.E. No. 4895

Title Deputy County Surveyor



County Surveyor's Comment _____

LOT 14



- REFERENCES:
- (1) SURVEY FOR C.J. CARPENTER, COUNTY SURVEYOR'S FILE # 6-14-149
 - (2) SUBDIVISION #3 LIVINGSTON LAND COLONY, 3 O.P. 58, M.C.R.

