

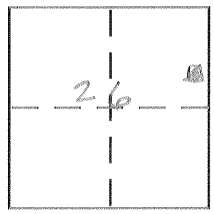
CORNER RECORD

Document Number 245-PPP

City of Livingston

County of Merced, California

Brief Legal Description Lots 2 & 3 Block 9 Livingston Land & Colony Co's Addition #1 to Town of Livingston 40P12



6/11

CORNER TYPE

Government Corner Control
Meander Property
Rancho Other
Date of Survey 11-21-06

COORDINATES (Optional)

N. _____
E. _____
Zone _____ NAD27 NAD83
NAD83 Epoch _____
Elev. _____
Vert. Datum: NGVD29 NAVD88
Meas. Units: Metric Imperial

Corner - Left as found Found and tagged Established Reestablished Rebuilt

Identification and type of corner found: Evidence used to identify or procedure used to establish or reestablish the corner:

See sketch

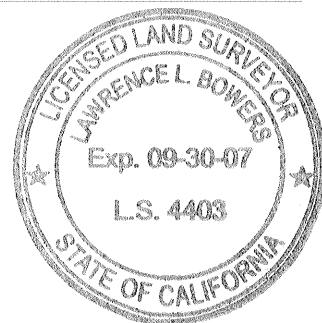
A description of the physical condition of the monument as found and as set or reset:

See sketch

SURVEYOR'S STATEMENT

This Corner Record was prepared by me or under my direction in conformance with the Land Surveyor's Act on 12-15-06

Signed [Signature] P.L.S or R.C.E. No. _____



COUNTY SURVEYOR'S STATEMENT

This Corner Record was received Dec. 15, 2006

and examined and filed Dec. 26, 2006

Signed [Signature] P.L.S or ~~R.C.E.~~ No. 4895

Title Depa County Surveyor



County Surveyor's Comment _____

LIVINGSTON LAND & COLONY Co.'s
ADDITION No. 1
 TO THE
TOWN OF LIVINGSTON
 VOLUME 4, OFFICIAL PLATS, PAGE 12
 MERCED COUNTY RECORDS

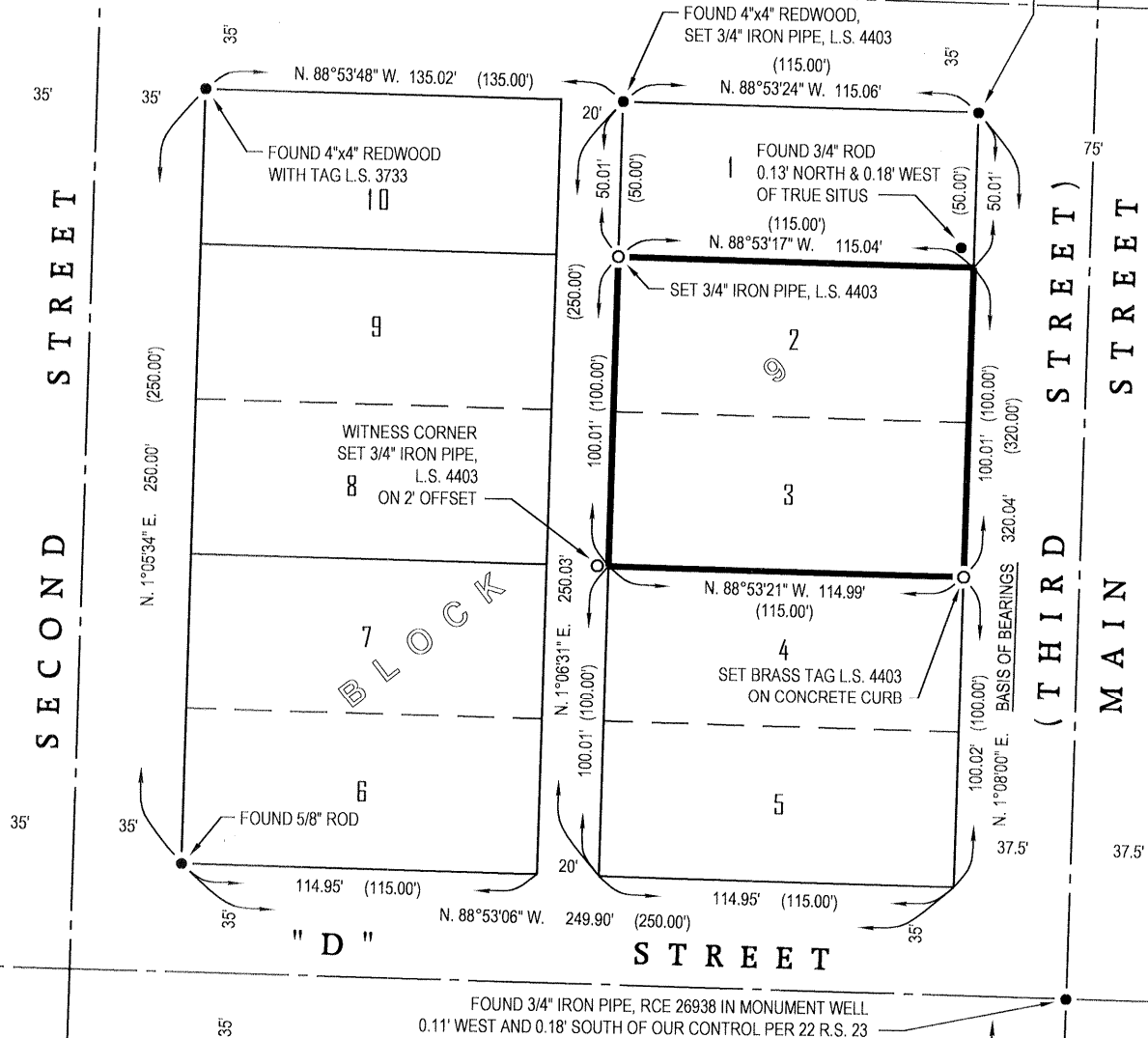
SECOND STREET

" C " STREET

(THIRD) MAIN STREET

" D " STREET

STREET



Basis of bearings and record distances shown in brackets per reference map of record.

