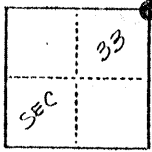


CORNER RECORD

COUNTY OF MERCED T. 8 S R. 16 E M.D.B. & MERIDIAN CALIFORNIA

CORNER TYPE: GOV'T. CORNER MEANDER RANCHO CONTROL OTHER

CORNER IDENTIFICATION — DATE OF VISIT 4/1 19 75



N.E. CORNER
SECTION 33

CORNER — LEFT AS FOUND FOUND AND TAGGED REESTABLISHED OBLITERATED CORNER REBUILT

PHYSICAL DESCRIPTION OF CORNER FOUND; EVIDENCE AND METHOD USED TO IDENTIFY OR REESTABLISH

Found 2" Iron Pipe at section corner and 4"x4" Post 30 feet North from swing ties shown in Merced County Road Dept. field book no. 71, page 39

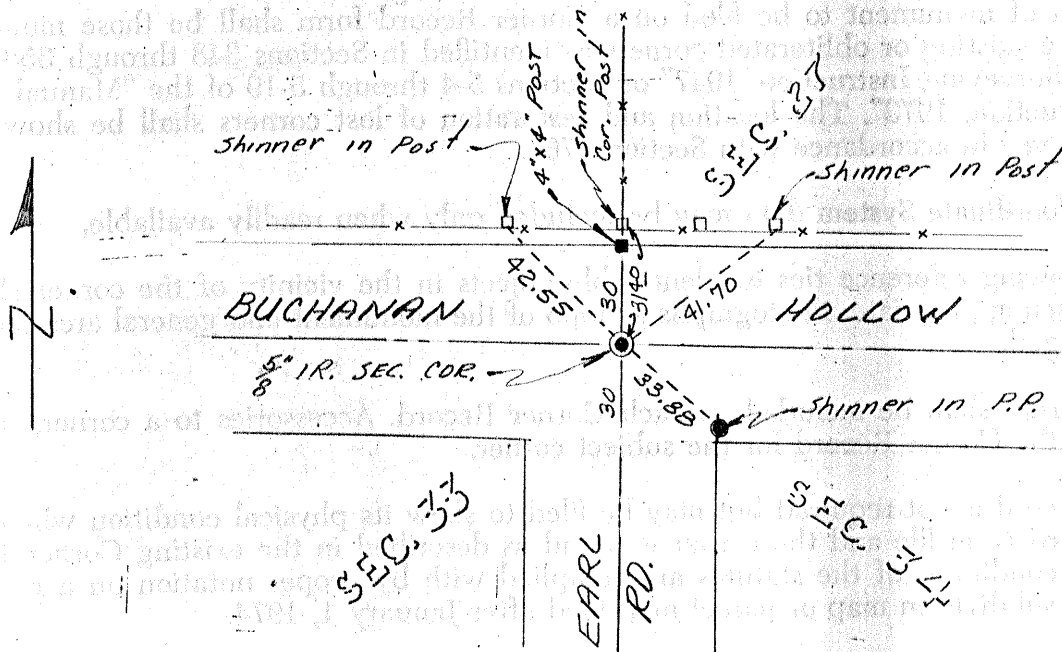
PHYSICAL DESCRIPTION OF MONUMENTS REBUILT OR PERPETUATED

Brought up existing monument with 5/8" IRON ROD, tagged R.C.E. No. 13,760 in Survey Encasement

CALIFORNIA COORDINATE SYSTEM ORDER: FIRST SECOND THIRD
 STATIONS USED: NGS (USC & GS) STATE COUNTY OTHER STATION _____ STATION _____
 ZONE _____ ELEVATION _____ NORTHINGS (Y) _____ EASTINGS (X) _____

(Fold)

SKETCH: (Include reference tie or witness points, remarks and topo of area)



SURVEYOR'S CERTIFICATE

THIS CORNER RECORD WAS PREPARED BY ME OR UNDER MY DIRECTION IN CONFORMANCE WITH THE LAND SURVEYORS ACT ON _____ 19____.

SIGNED: _____

L.S. or R.C.E. No.: _____

SEAL

COUNTY SURVEYOR'S CERTIFICATE

THE CORNER RECORD WAS RECEIVED _____ 19____

AND EXAMINED AND FILED _____ 19____

BY: _____

TITLE: _____

DOCUMENT No. 221

STATEMENT ON BACK OF SHEET

YES NO