

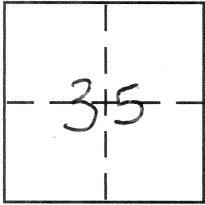
CORNER RECORD

Document Number 220-A, B & C

City of _____

County of MERCED, California

Brief Legal Description SECTION 35 8/16



CORNER TYPE

Government Corner Control
Meander Property
Rancho Other
Date of Survey 6/14/11

COORDINATES (Optional)

N. _____
E. _____
Zone _____ NAD27 NAD83
NAD83 Epoch _____
Elev. _____
Vert. Datum: NGVD29 NAVD88
Meas. Units: Metric Imperial

Corner - Left as found Found and tagged Established Reestablished Rebuilt

Identification and type of corner found: Evidence used to identify or procedure used to establish or reestablish the corner:

SEE SKETCH

A description of the physical condition of the monument as found and as set or reset:

SEE SKETCH

SURVEYOR'S STATEMENT

This Corner Record was prepared by me or under my direction in conformance with the Land Surveyor's Act on August 29 2011

Signed [Signature] P.L.S or R.C.E. No. _____



COUNTY SURVEYOR'S STATEMENT

This Corner Record was received August 31, 2011

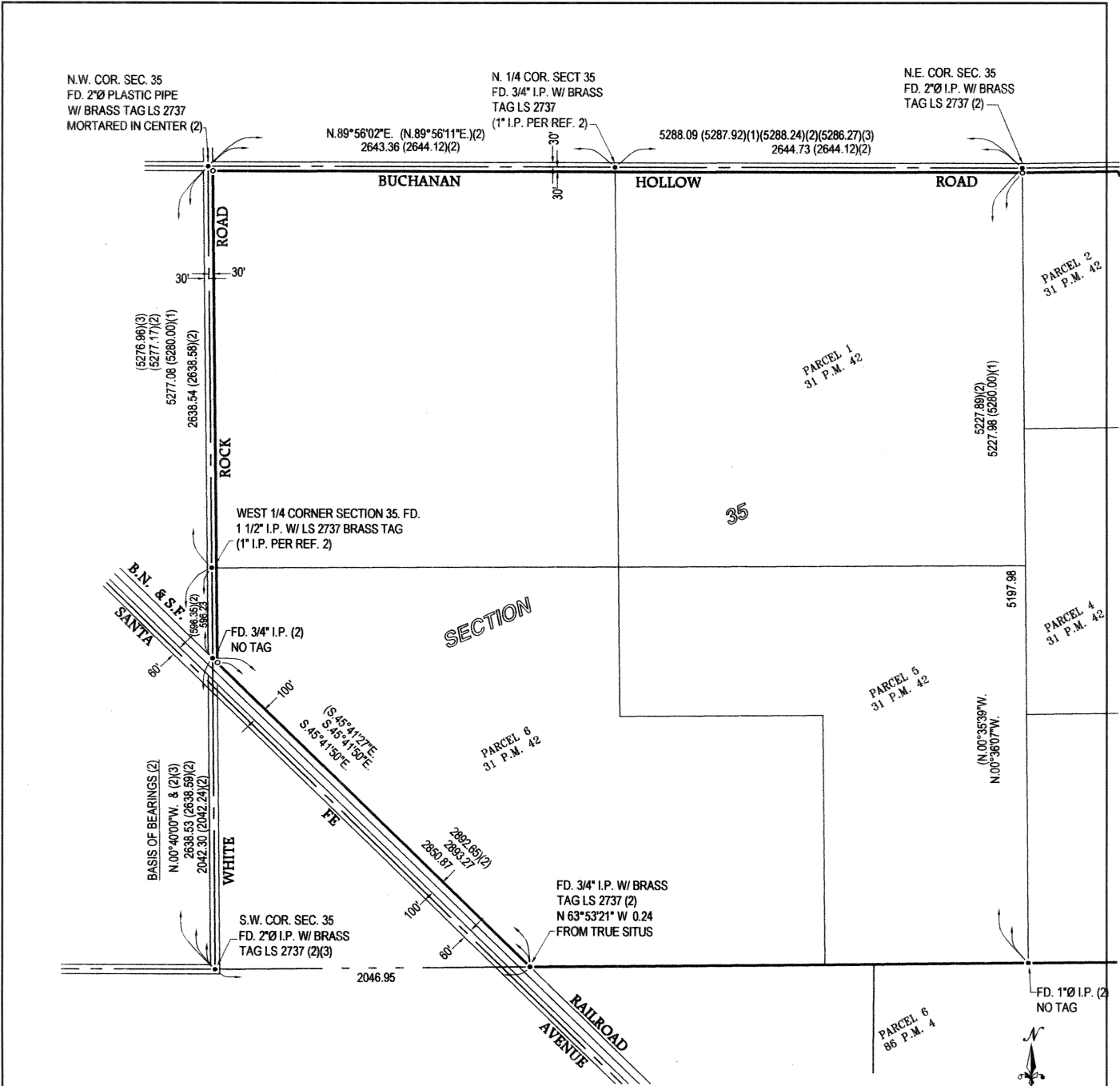
and examined and filed August 31, 2011

Signed [Signature] P.L.S or R.C.E. No. 4895

Title Dep. County Surveyor



County Surveyor's Comment _____



REFERENCES:

1. Government Plat, T. 8 S., R. 16 E., M.D.B. & M.
2. Parcel Map for First Harvest, 31 P.M. 42, M.C.R.
3. Map and Fieldnotes of the Le Grand and Chowchilla Road, on file with the Merced County Surveyors Office. File No. 5-307 & Vol. 14 Pg. 66-69.

BASIS OF BEARINGS:

N.0°40'00"W. for the west line of Section 35 T. 8 S., R. 16 E. M.D.B. & M., as shown on the Parcel Map for First Harvest, Vol. 31 P.M. 42, M.C.R.

LEGEND

- FOUND AND ACCEPTED MONUMENT AS INDICATED
- SET 3/4" IRON PIPE, L.S. 4403

