

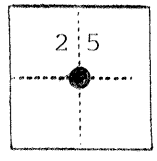
# 212

CORNER RECORD

COUNTY OF Merced T. 11 South R. 10 East Mt. Diablo MERIDIAN CALIFORNIA

CORNER TYPE: GOV'T. CORNER  MEANDER  RANCHO  CONTROL  OTHER

CORNER IDENTIFICATION — DATE OF VISIT OCTOBER 20 19 76



Center quarter corner, Section 25, T11S, R10E, M.D.M.

CORNER — LEFT AS FOUND  FOUND AND TAGGED  REESTABLISHED OBLITERATED CORNER  REBUILT

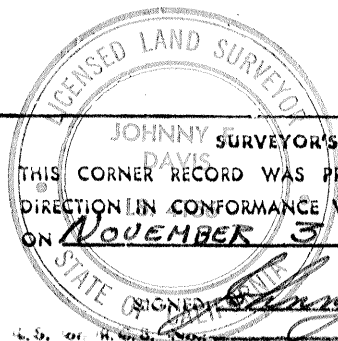
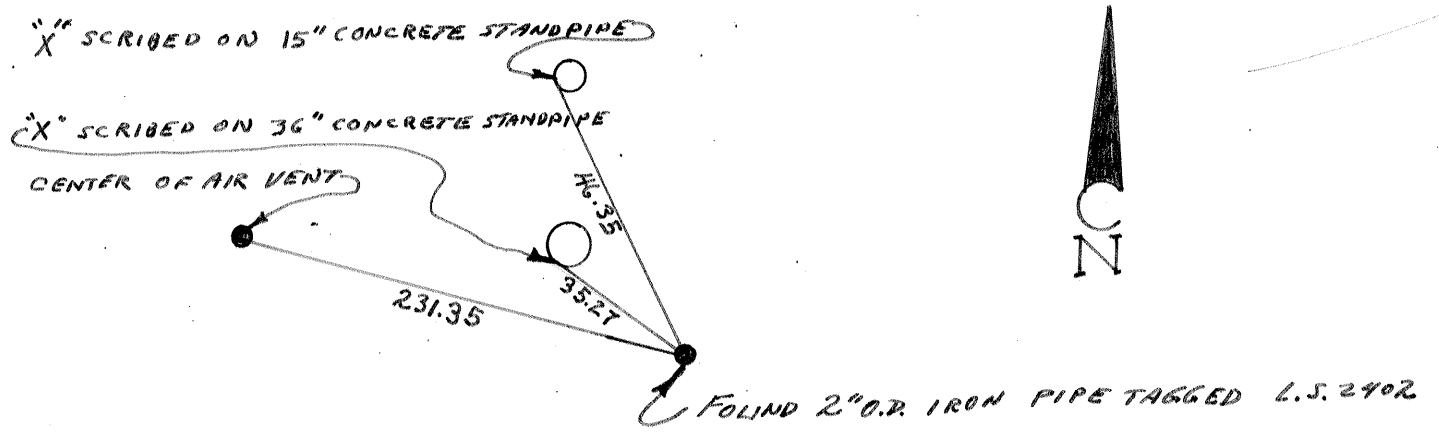
PHYSICAL DESCRIPTION OF CORNER FOUND; EVIDENCE AND METHOD USED TO IDENTIFY OR REESTABLISH

2" O.D. iron pipe tagged L.S. 4156 at 0.4 feet below surface of dirt roadway

PHYSICAL DESCRIPTION OF MONUMENTS REBUILT OR PERPETUATED

CALIFORNIA COORDINATE SYSTEM ORDER: FIRST  SECOND  THIRD   
STATIONS USED: NGS (USC & GS)  STATE  COUNTY  OTHER  STATION \_\_\_\_\_ STATION \_\_\_\_\_  
ZONE \_\_\_\_\_ ELEVATION \_\_\_\_\_ NORTHINGS (Y) \_\_\_\_\_ EASTINGS (X) \_\_\_\_\_

SKETCH: (Include reference tie or witness points, remarks and topo of area)



SURVEYOR'S CERTIFICATE  
THIS CORNER RECORD WAS PREPARED BY ME OR UNDER MY DIRECTION IN CONFORMANCE WITH THE LAND SURVEYORS ACT ON NOVEMBER 3 1976  
SIGNED: Johnny E. Davis  
L.S. 4156

COUNTY SURVEYOR'S CERTIFICATE  
THE CORNER RECORD WAS RECEIVED \_\_\_\_\_ 19\_\_\_\_\_  
AND EXAMINED AND FILED \_\_\_\_\_ 19\_\_\_\_\_  
BY: \_\_\_\_\_  
TITLE: \_\_\_\_\_

DOCUMENT NO. 212  
REQUIREMENT FOR FILED FOR SURVEY