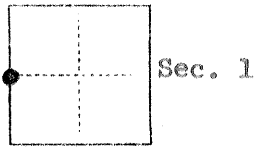


No 16

COI IR RECOR

COUNTY OF Merced T 3 R 9E MDR MERIDIAN CALIFORNIA
CORNER TYPE: GOV'T. CORNER MEANDER RANCHO CONTROL OTHER
CORNER IDENTIFICATION -- DATE OF VISIT January 6, 1976 19



CORNER -- LEFT AS FOUND FOUND AND TAGGED REESTABLISHED OBLITERATED CORNER REBUILT

PHYSICAL DESCRIPTION OF CORNER FOUND; EVIDENCE AND METHOD USED TO IDENTIFY OR REESTABLISH

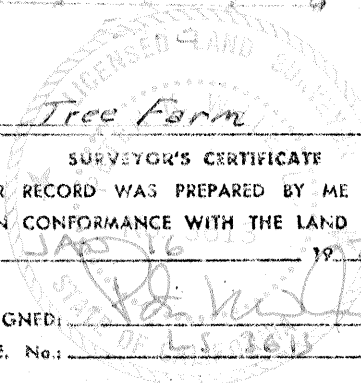
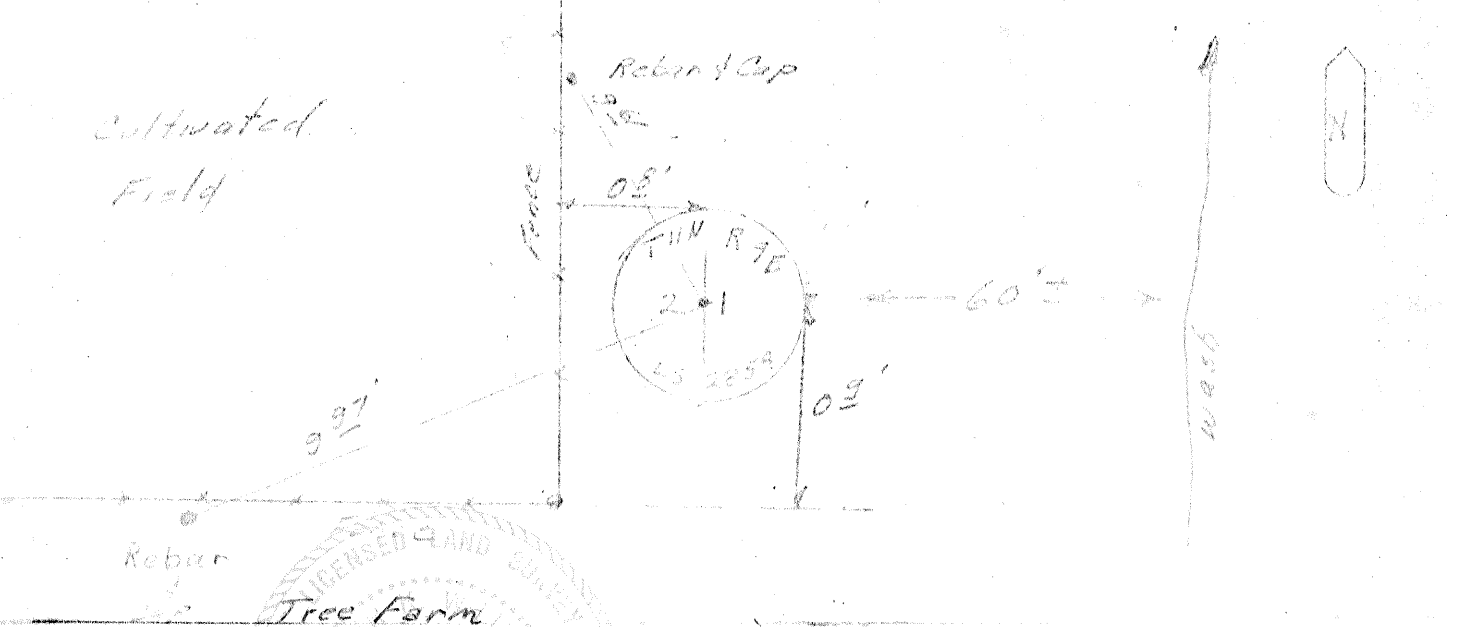
2 1/2" Iron Pipe - Up 12" with 2 1/2" Brass Cap Stamped LS 2854

PHYSICAL DESCRIPTION OF MONUMENTS REBUILT OR PERPETUATED

CORNER LOCATED BY P.G.&E. SURVEY
BUT NOT VERIFIED
PACIFIC GAS AND ELECTRIC CO.
LAND DEPT. JOB 184076

CALIFORNIA COORDINATE SYSTEM ORDER: FIRST SECOND THIRD
STATIONS USED: NGS (USC & GS) STATE COUNTY OTHER STATION _____ STATION _____
ZONE _____ ELEVATION _____ NORTHINGS (Y) _____ EASTINGS (X) _____

SKETCH: (Include reference tie or witness points, remarks and topo of area)



SURVEYOR'S CERTIFICATE
THIS CORNER RECORD WAS PREPARED BY ME OR UNDER MY DIRECTION IN CONFORMANCE WITH THE LAND SURVEYORS ACT ON _____ 19 76
SIGNED: _____
L.S. or R.C.E. No.: _____

COUNTY SURVEYOR'S CERTIFICATE
THE CORNER RECORD WAS RECEIVED _____ 19 _____
AND EXAMINED AND FILED _____ 19 _____
BY: _____
TITLE: _____
DOCUMENT No. 166

SEAL

STATEMENT ON BACK OF SHEET

YES NO