

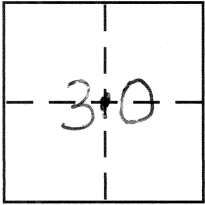
**CORNER RECORD**

Document Number 5074 & 147-A

City of \_\_\_\_\_

County of MERCED, California

Brief Legal Description E. LINE PARCEL 4 102 P.M. 33 M.C.R.



**CORNER TYPE**

Government Corner  Control   
Meander  Property   
Rancho  Other   
Date of Survey 6/5/09

**COORDINATES (Optional)**

N. \_\_\_\_\_  
E. \_\_\_\_\_  
Zone \_\_\_\_\_ NAD27  NAD83   
NAD83 Epoch \_\_\_\_\_  
Elev. \_\_\_\_\_  
Vert. Datum: NGVD29  NAVD88   
Meas. Units: Metric  Imperial

Corner - Left as found  Found and tagged  Established  Reestablished  Rebuilt

Identification and type of corner found: Evidence used to identify or procedure used to establish or reestablish the corner:

SEE SKETCH

A description of the physical condition of the monument as found and as set or reset:

SEE SKETCH

**SURVEYOR'S STATEMENT**

This Corner Record was prepared by me or under my direction in conformance with the Land Surveyors Act on June 10, 2009

Signed [Signature] P.L.S or R.C.E. No. \_\_\_\_\_



**COUNTY SURVEYOR'S STATEMENT**

This Corner Record was received June 10, 2009

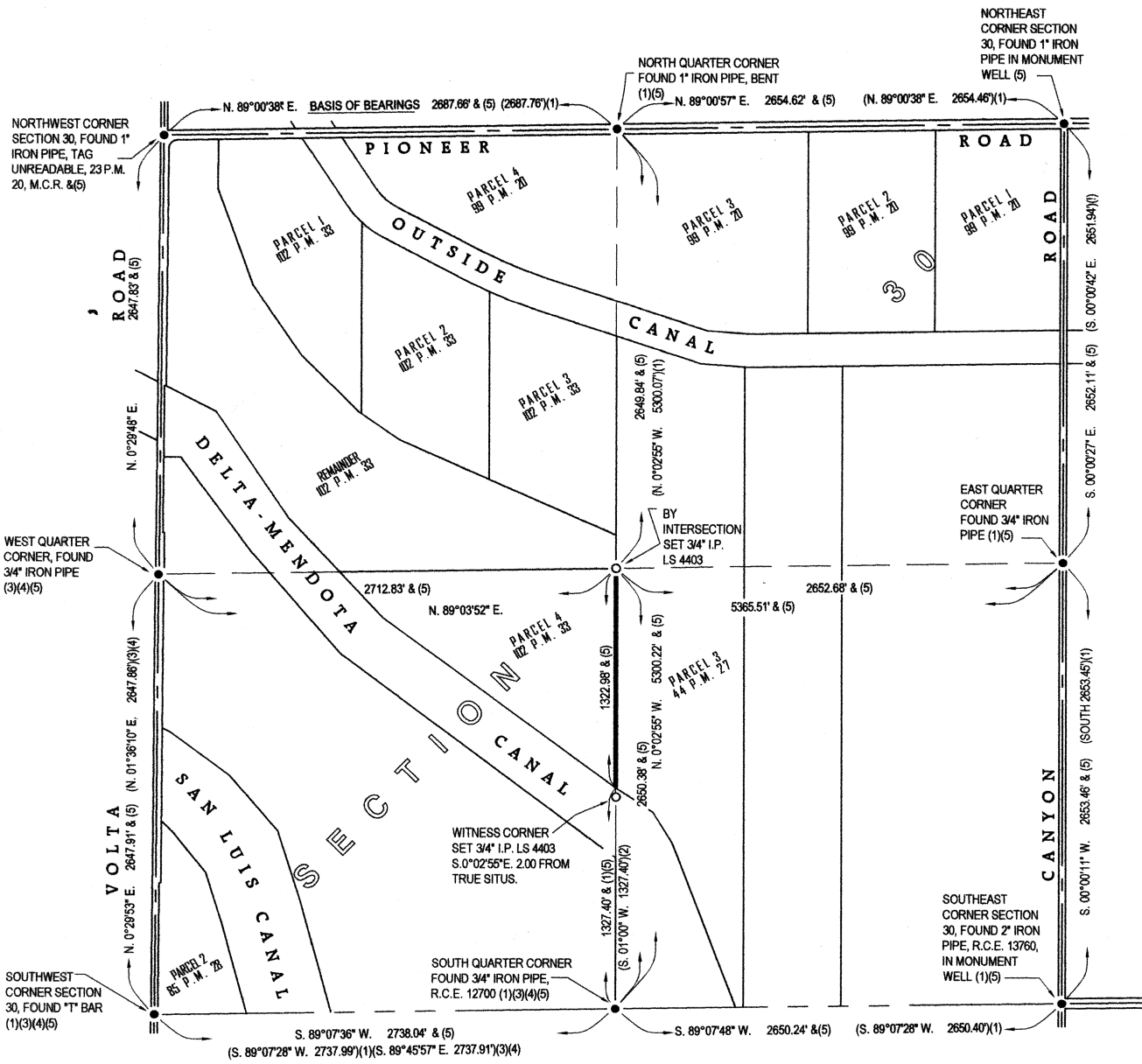
and examined and filed June 10, 2009

Signed [Signature] P.L.S or ~~R.C.E.~~ No. 4895

Title Dep. County Surveyor



County Surveyor's Comment \_\_\_\_\_



**BASIS OF BEARINGS:**

N.89°00'38"E. for the centerline of Pioneer Road, as shown on the Parcel Map for John Amabile, Volume 44, Parcel Maps, Page 27, Merced County Records.

**REFERENCE:**

- (1) Parcel Map for John Amabile, 44 P.M. 27, M.C.R.
- (2) U.S.B.R. Delta-Mendota Canal #214-215-1336
- (3) Parcel Map for Dry Creek Land Company, 85 P.M. 28, M.C.R.
- (4) Record of Survey for Oakwood Builders, Inc. 27 R.S. 9, M.C.R.
- (5) Parcel Map for John & Nina Zoria, 102 P.M. 33 M.C.R.

