

# CORNER RECORD

COUNTY OF Merced T. 10 S. R. 9 E. M.D.B. & MERIDIAN CALIFORNIA

CORNER TYPE: GOV'T. CORNER  MEANDER  RANCHO  CONTROL  OTHER

CORNER IDENTIFICATION — DATE OF VISIT November 5, 19 84



Northwest corner of Section 14, 10/9.

CORNER — LEFT AS FOUND  FOUND AND TAGGED  REESTABLISHED OBLITERATED CORNER  REBUILT

PHYSICAL DESCRIPTION OF CORNER FOUND; EVIDENCE AND METHOD USED TO IDENTIFY OR REESTABLISH

2" O.D. iron pipe with tag. USBR 

10	11
15	14

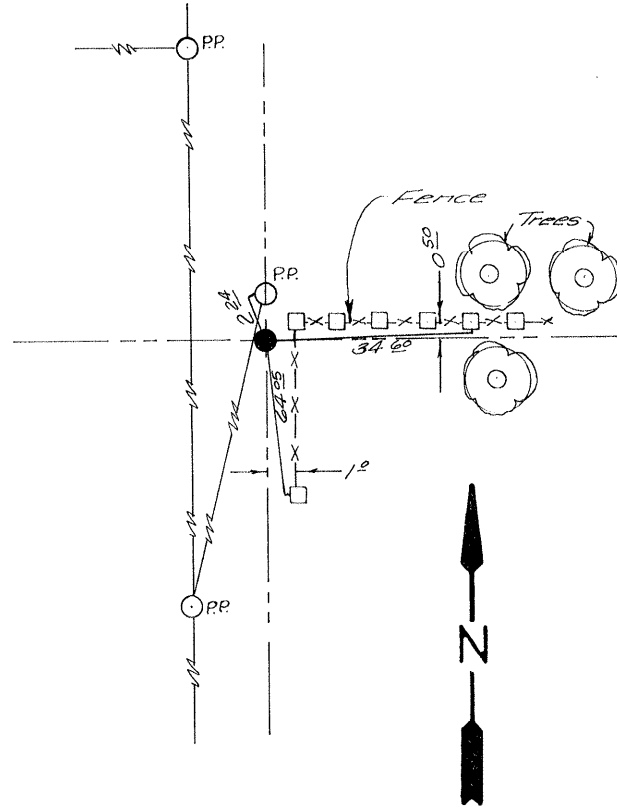
 Flush.

PHYSICAL DESCRIPTION OF MONUMENTS REBUILT OR PERPETUATED

SKETCH: (Include reference tie or witness points, remarks and topo of area)

Ties

- 2.24' South of nail & shiner in Power Pole.
- 34.60' West of nail & shiner in Fence Post.
- 64.05' North of nail & shiner in Fence Post.
- 0.5' South of fence line East.
- 1.0' West of fence line South.



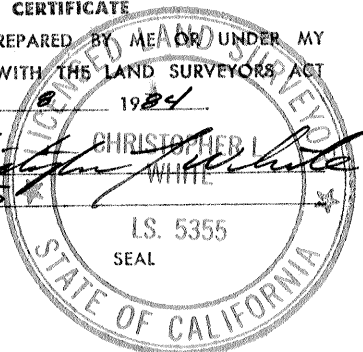
Book 84-3-34

**SURVEYOR'S CERTIFICATE**

THIS CORNER RECORD WAS PREPARED BY ME OR UNDER MY DIRECTION IN CONFORMANCE WITH THE LAND SURVEYORS ACT ON November 1984

SIGNED: Christopher I. White  
CHRISTOPHER I. WHITE

L.S. or R.C.E. No. 5355



**COUNTY SURVEYOR'S CERTIFICATE**

THE CORNER RECORD WAS RECEIVED NOVEMBER 13 1984 AND EXAMINED AND FILED NOVEMBER 13 1984

BY: Roy B. Freeman  
TITLE: Deputy County Surveyor

DOCUMENT No. LS #5523 141

STATEMENT ON BACK OF SHEET YES  NO

