

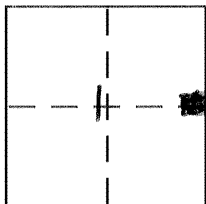
CORNER RECORD

Document Number 139-N/3858

City of _____

County of MERCED, California

Brief Legal Description LOTS 17-26 & LOT 10 BLOCK 12, TOWN OF VOLTA 20.P. 15 M.C.R.



CORNER TYPE

Government Corner Control
 Meander Property
 Rancho Other
 Date of Survey 12-29-06

COORDINATES (Optional)

N. _____
 E. _____
 Zone _____ NAD27 NAD83
 NAD83 Epoch _____
 Elev. _____
 Vert. Datum: NGVD29 NAVD88
 Meas. Units: Metric Imperial

Corner – Left as found Found and tagged Established Reestablished Rebuilt

Identification and type of corner found: Evidence used to identify or procedure used to establish or reestablish the corner:

SEE SKETCH

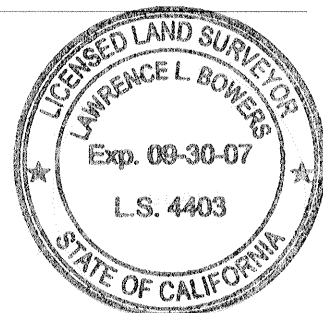
A description of the physical condition of the monument as found and as set or reset:

SEE SKETCH

SURVEYOR'S STATEMENT

This Corner Record was prepared by me or under my direction in conformance with the Land Surveyor's Act on 2-2-07

Signed [Signature] P.L.S or R.C.E. No. _____



COUNTY SURVEYOR'S STATEMENT

This Corner Record was received Feb. 2, 2007

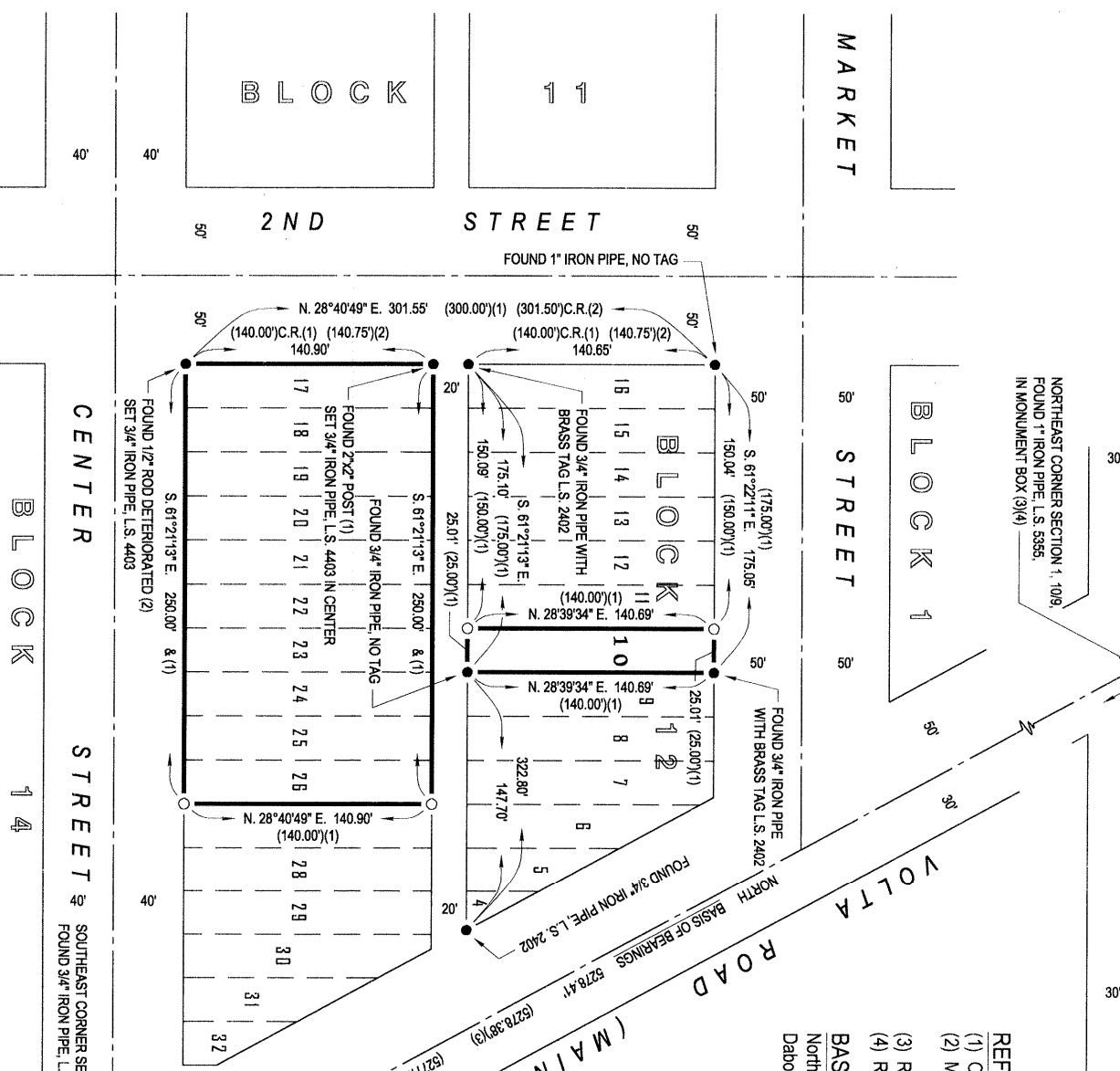
and examined and filed Feb. 2, 2007

Signed [Signature] P.L.S or R.C.E. No. 4895

Title Dep. County Surveyor

County Surveyor's Comment _____





NORTHEAST CORNER SECTION 1, 10/9,
 FOUND 1" IRON PIPE L.S. 5355,
 IN MONUMENT BOX (3/4)

REFERENCES

- (1) Official Map of the Town of Volta, 2 O.P. 15, M.C.R.
- (2) Merced County Road Department Town of Volta Retracement Survey, County Surveyor's File #6-1A-33
- (3) Record of Survey for Volta Community Services District, 29 R.S. 35, M.C.R.
- (4) Record of Survey for Mitch Dabo, 34 R.S. 28, M.C.R.

BASIS OF BEARINGS

North for the east line of Section 1 as shown on the Record of Survey for Mitch Dabo, Volume 34, Record of Surveys, Page 28, Merced County Records.

LEGEND

- Found and accepted monument as indicated
- Set 3/4" iron pipe, L.S. 4403

