

134

CORN RECORD

COUNTY OF Merced T. 10S R. 9E MDB& MERIDIAN CALIFORNIA

CORNER TYPE: GOV'T. CORNER MEANDER RANCHO CONTROL OTHER

CORNER IDENTIFICATION — DATE OF VISIT 12-13-74 1974



Cor. #
134

CORNER — LEFT AS FOUND FOUND AND TAGGED REESTABLISHED OBLITERATED CORNER REBUILT

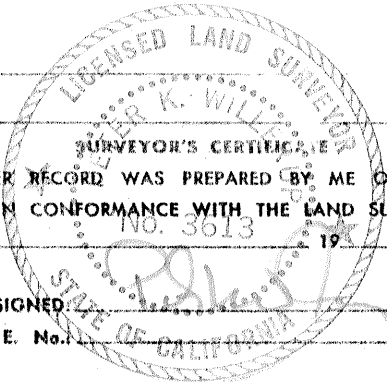
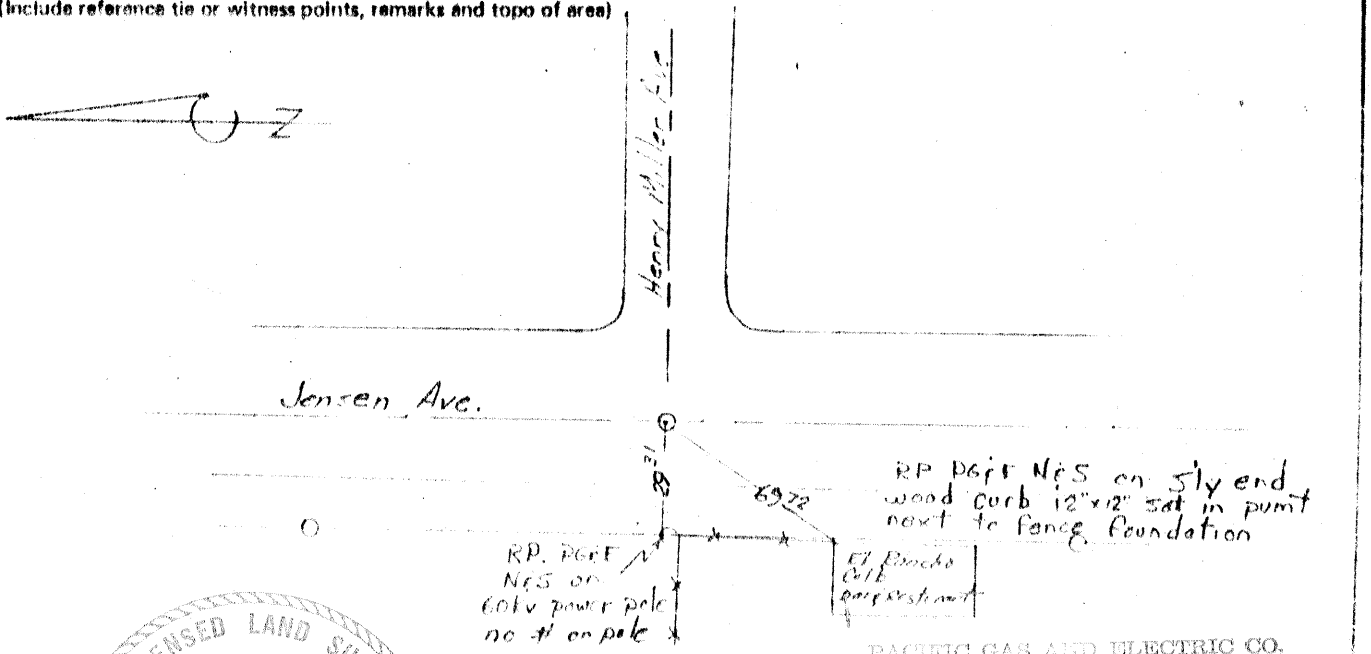
PHYSICAL DESCRIPTION OF CORNER FOUND; EVIDENCE AND METHOD USED TO IDENTIFY OR REESTABLISH

Fd. Rusted T bar 0^{3'} below pavement in intersection of Henry Miller Ave. and Jensen Ave. as per Record of Survey Vol. 10 pg. 46, Merced County.

PHYSICAL DESCRIPTION OF MONUMENTS REBUILT OR PERPETUATED

CALIFORNIA COORDINATE SYSTEM ORDER: FIRST SECOND THIRD
STATIONS USED: NGS (USC & GS) STATE COUNTY OTHER STATION _____ STATION _____
ZONE _____ ELEVATION _____ NORTHINGS (Y) _____ EASTINGS (X) _____

SKETCH: (Include reference tie or witness points, remarks and topo of area)



THIS CORNER RECORD WAS PREPARED BY ME OR UNDER MY DIRECTION IN CONFORMANCE WITH THE LAND SURVEYORS ACT ON 1-2 1975

SIGNED: _____
L.S. or R.C.E. No. 25360

SEAL

PACIFIC GAS AND ELECTRIC CO.
LAND DEPT. JOB LD 9688

COUNTY SURVEYOR'S CERTIFICATE
THE CORNER RECORD WAS RECEIVED 2-18 1975
AND EXAMINED AND FILED 2-19 1975

BY: J.W. [Signature]
TITLE: Co Surveyor

DOCUMENT No. 134

STATEMENT ON BACK OF SHEET

YES NO