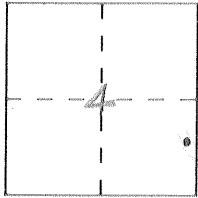


CORNER RECORD

Document Number 105-LL

City of _____ County of MERCED, California

Brief Legal Description E Mon. Hornitos Road - Section 4, T5S, R15E



CORNER TYPE

- Government Corner
- Meander
- Rancho
- Date of Survey 10-6-92
- Control
- Property
- Other

COORDINATES (Optional)

N. _____
 E. _____
 Zone _____ Datum _____
 Elev. _____

Corner — Left as found Found and tagged Established Reestablished Rebuilt

Identification and type of corner found: Evidence used to identify or procedure used to establish or reestablish the corner:
Ed. 1 1/4" Iron Pipe in monument well, R.C.E. 13760

BK658-51

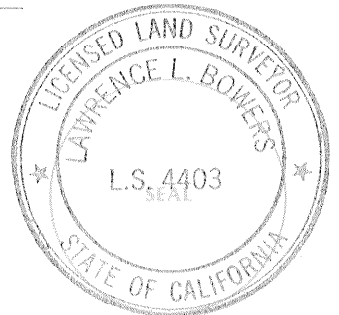
A description of the physical condition of the monument as found and as set or reset: _____

No changes 8-31-93

SURVEYOR'S STATEMENT

This Corner Record was prepared by me or under my direction in conformance with the Land Surveyors' Act on Sept. 7 19 93.

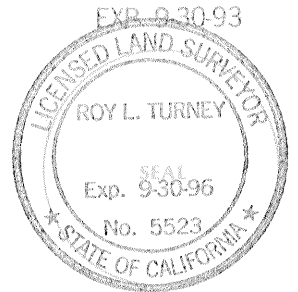
Signed [Signature] L.S. or R.C.E. Number _____

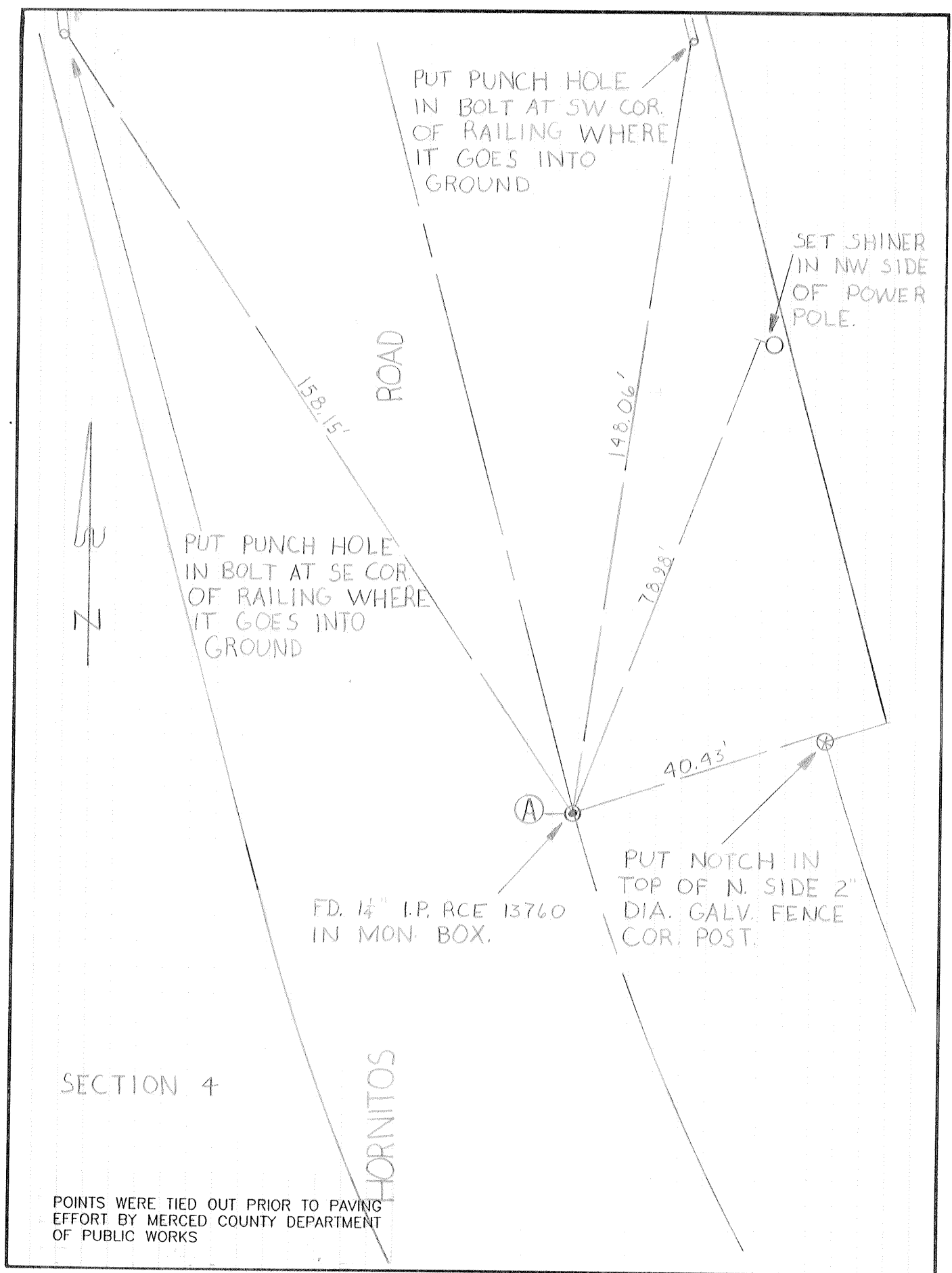


COUNTY SURVEYOR'S STATEMENT

This Corner Record was received SEPT. 19 93 and examined and filed SEPT. 16, 19 93.

Signed [Signature] Title DEP. CO. SUR.
County Surveyor's Comment _____





PUT PUNCH HOLE
IN BOLT AT SW COR.
OF RAILING WHERE
IT GOES INTO
GROUND.

SET SHINER
IN NW SIDE
OF POWER
POLE.

158.15'
ROAD



PUT PUNCH HOLE
IN BOLT AT SE COR.
OF RAILING WHERE
IT GOES INTO
GROUND

148.06'

78.28'

40.43'

(A)

FD. 1/4" I.P. RCE 13760
IN MON. BOX.

PUT NOTCH IN
TOP OF N. SIDE 2"
DIA. GALV. FENCE
COR. POST.

SECTION 4

HORNITOS

POINTS WERE TIED OUT PRIOR TO PAVING
EFFORT BY MERCED COUNTY DEPARTMENT
OF PUBLIC WORKS