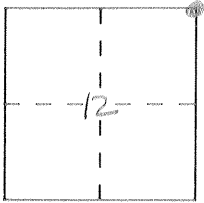


CORNER RECORD

Document Number 84

City of \_\_\_\_\_ County of MERCED, California

Brief Legal Description N.E. CORNER SECTION 12 T6S R12E



CORNER TYPE

Government Corner  Control   
Meander  Property   
Rancho  Other   
Date of Survey 10-4-91

COORDINATES (Optional)

N. \_\_\_\_\_  
E. \_\_\_\_\_  
Zone \_\_\_\_\_ Datum \_\_\_\_\_  
Elev. \_\_\_\_\_

Corner — Left as found  Found and tagged  Established  Reestablished  Rebuilt

Identification and type of corner found: Evidence used to identify or procedure used to establish or reestablish the corner:

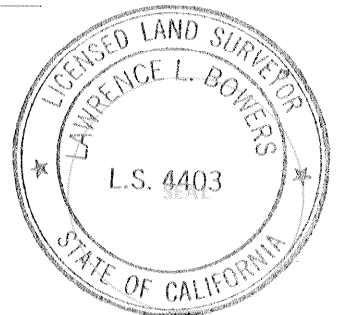
Found 3/4" Iron Rod, monument well set over existing monument after paving.

A description of the physical condition of the monument as found and as set or reset: \_\_\_\_\_

SURVEYOR'S STATEMENT

This Corner Record was prepared by me or under my direction in conformance with the Land Surveyors' Act on 3-16 1992.

Signed [Signature] L.S. or R.C.E. Number \_\_\_\_\_



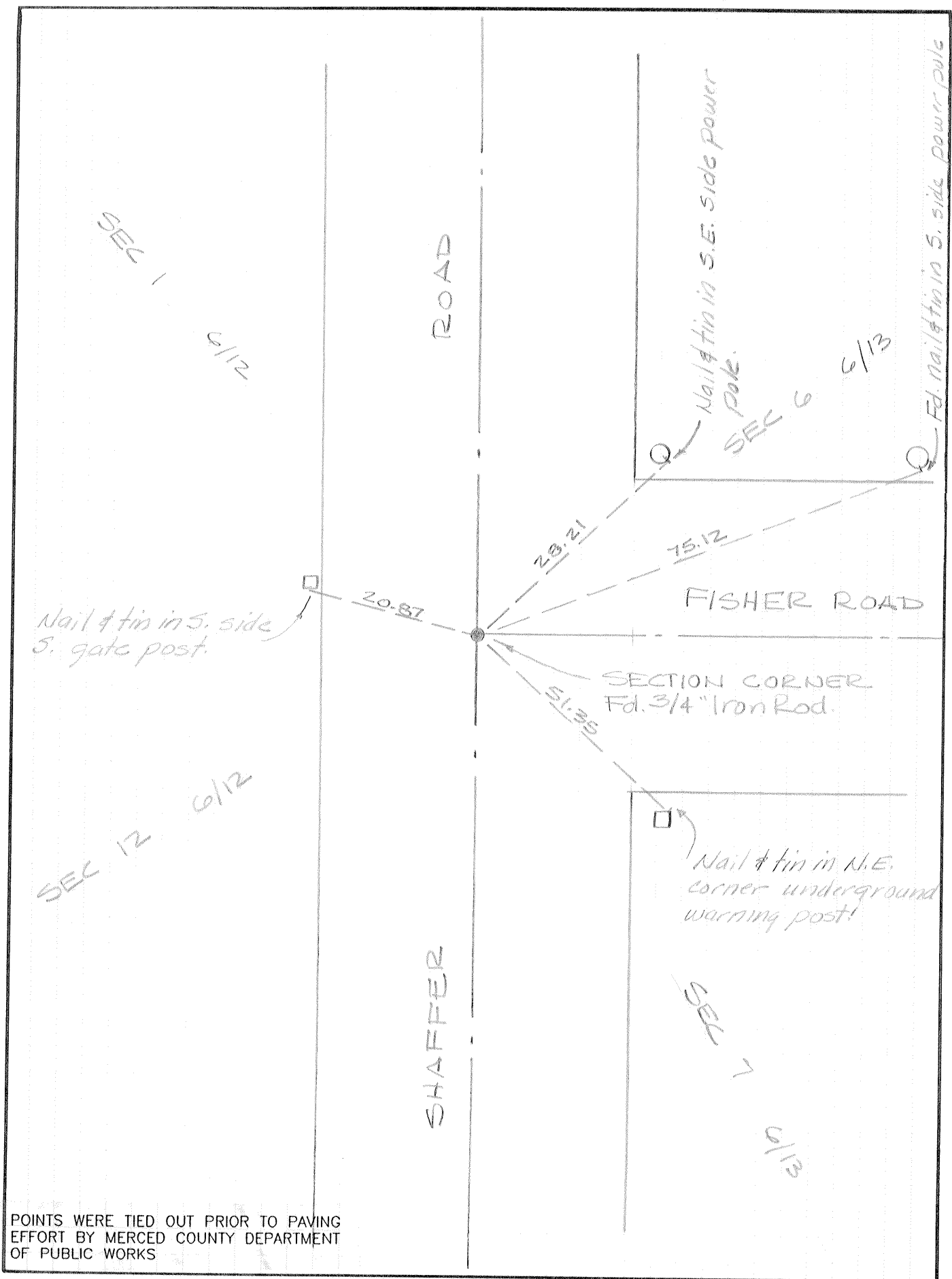
COUNTY SURVEYOR'S STATEMENT

This Corner Record was received 3-17- 1992 and examined and filed 3-19 1992.

Signed [Signature] Title Dep. Co. Surveyor

County Surveyor's Comment See Record of Survey 25-26





POINTS WERE TIED OUT PRIOR TO PAVING EFFORT BY MERCED COUNTY DEPARTMENT OF PUBLIC WORKS