

CORNER RECORD

Document Number 80K

City of _____ County of Merced, California

Brief Legal Description east line of Cody Avenue at the centerline of Park Street



CORNER TYPE

- Government Corner
- Meander
- Rancho
- Date of Survey _____
- Control
- Property
- Other

COORDINATES (Optional)

N. _____
 E. _____
 Zone _____ Datum _____
 Elev. _____

7/15

Corner — Left as found Found and tagged Established Reestablished Rebuilt

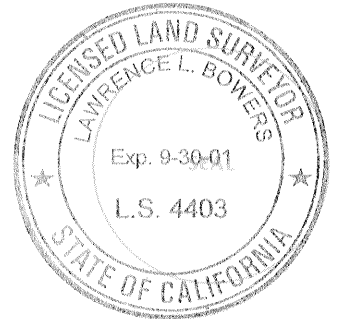
Identification and type of corner found: Evidence used to identify or procedure used to establish or reestablish the corner: monument as shown on back sketch (46-PM-38)

A description of the physical condition of the monument as found and as set or reset: good condition

SURVEYOR'S STATEMENT

This Corner Record was prepared by me or under my direction in conformance with the Land Surveyors' Act on March 3 1999.

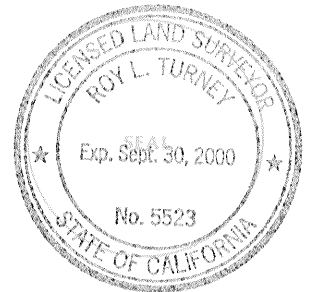
Signed [Signature] L.S. or R.C.E. Number _____



COUNTY SURVEYOR'S STATEMENT

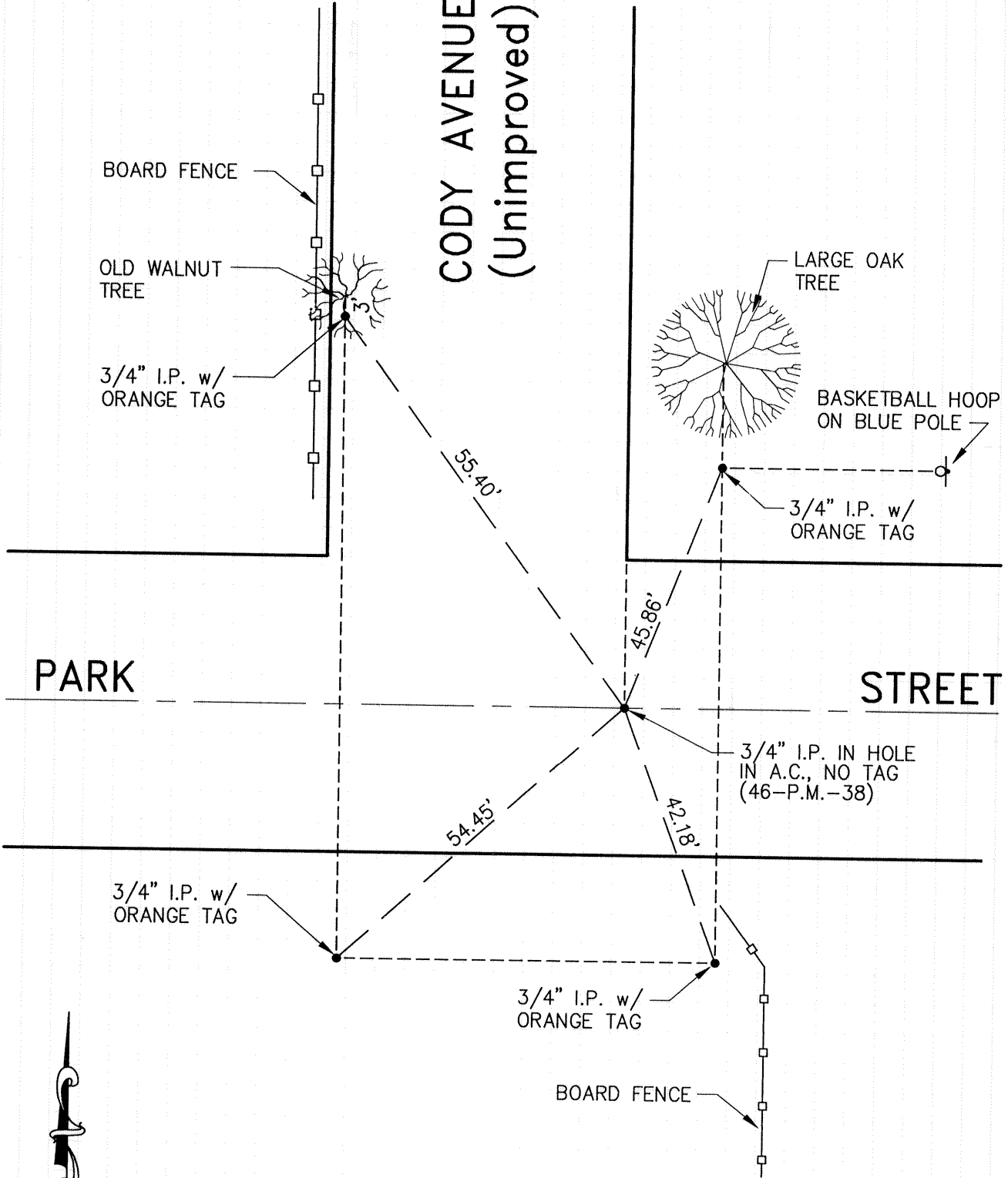
This Corner Record was received MARCH 3 1999 and examined and filed MARCH 4 1999.

Signed [Signature] Title DEP. CO. SUR.



County Surveyor's Comment _____

CODY AVENUE (Unimproved)



PARK

STREET



NOT TO SCALE

NOTE:
THE 3/4" I.P. w/ ORANGE TAGS REPRESENT
CENTERLINE MONUMENT TIES ONLY AND DO
NOT INDICATE PROPERTY CORNERS AND/OR
RIGHT-OF-WAYS.