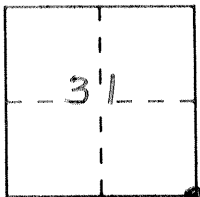


CORNER RECORD

Document Number COR. No. 67

City of _____ County of MERCED, California

Brief Legal Description S.E. COR. SECT. 31 T.5S., R.11E. M.D.M.



CORNER TYPE

Government Corner Control
Meander Property
Rancho Other
Date of Survey 9-22-92

**COORDINATES
(Optional)**

N. _____
E. _____
Zone _____ Datum _____
Elev. _____

Corner — Left as found Found and tagged Established Reestablished Rebuilt

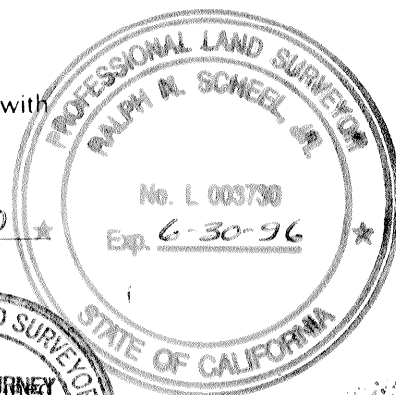
Identification and type of corner found: Evidence used to identify or procedure used to establish or reestablish the corner: 2" IRON PIPE - DOWN 2' IN GOOD CONDITION.

A description of the physical condition of the monument as found and as set or reset: SET 1" x 18" IRON PIPE OVER 2" IRON PIPE - CALTRANS PLUG & BRASS TAG - SET SPIKE AT SURFACE WITH PK'S 2' SW

SURVEYOR'S STATEMENT

This Corner Record was prepared by me or under my direction in conformance with the Land Surveyors' Act on 9-22 1992.

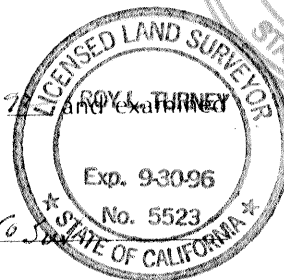
Signed Ralph M. Schneel L.S. or R.C.E. Number LS 3730



COUNTY SURVEYOR'S STATEMENT

This Corner Record was received November 1992 and filed 11-9 1992.

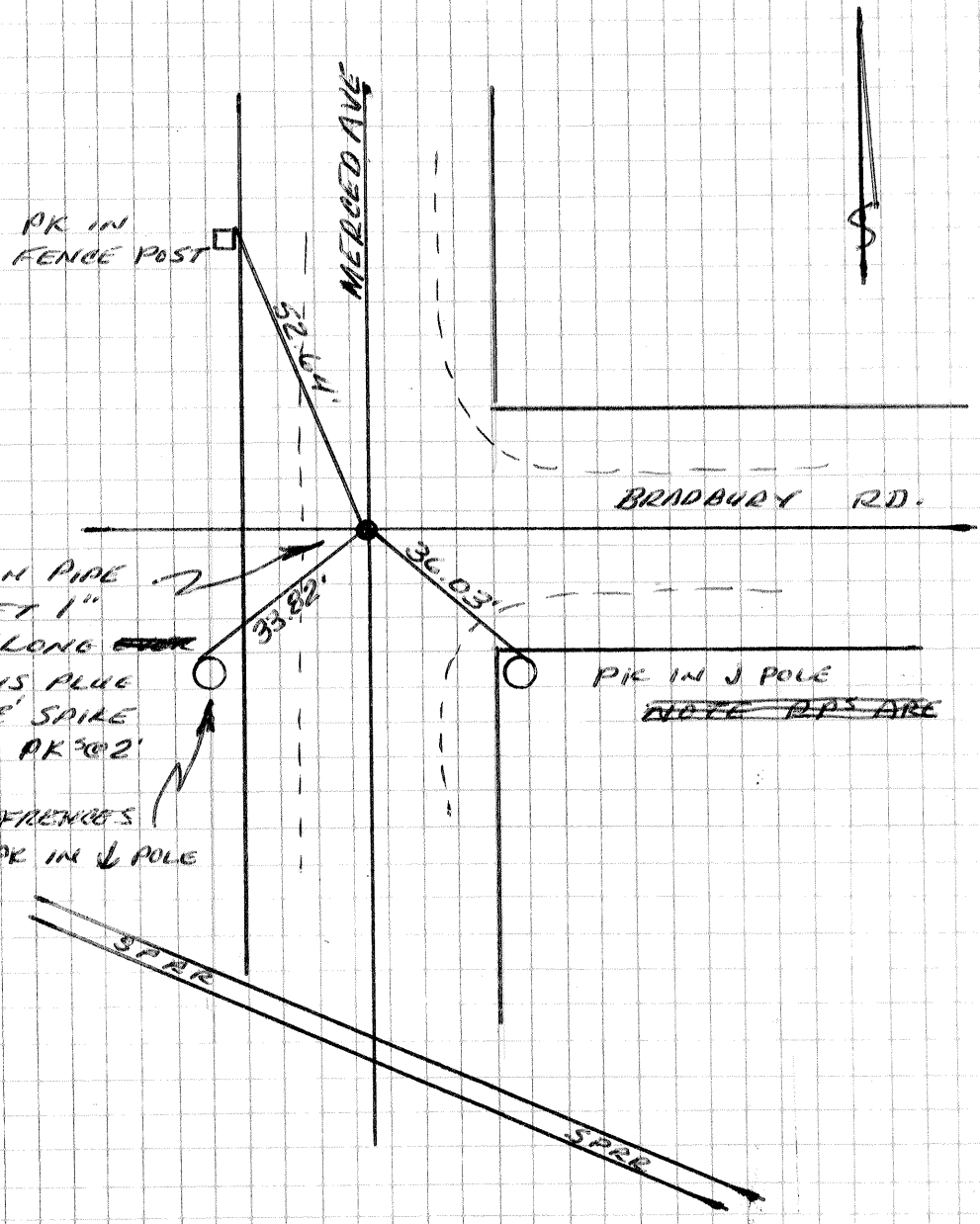
Signed Roy L. Turney Title Dep. Co. Surveyor



County Surveyor's Comment Monument agrees with Record of Survey 19 Pg 44 for Robert Rumley recorded 5-19-82 as well as other surveys in area

31	32
6	5

T55 R11 E MDM
 T65 R11 E MDM



FOUND 2" IRON PIPE
 DOWN 2.5' SET 1"
 IRON PIPE 18" LONG
 WITH CALTRANS PLUE
 & TAG OVER & SPIKE
 AT SURFACE. PK 2'
 SE & SW
 NO KNOWN REFERENCES
 PK IN J POLE

PK IN J POLE
~~NOTE: PPS ARE~~