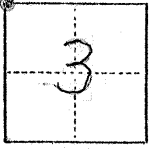


CORNER RECORD

COUNTY OF MERCED T. 8 S. R. 15 E. M.D.B.E. MERIDIAN CALIFORNIA

CORNER TYPE: GOV'T. CORNER MEANDER RANCHO CONTROL OTHER

CORNER IDENTIFICATION — DATE OF VISIT AUG 16 1976



NORTH WEST CORNER OF SECTION 4
SECTION CORNER

CORNER — LEFT AS FOUND FOUND AND TAGGED REESTABLISHED OBLITERATED CORNER REBUILT

PHYSICAL DESCRIPTION OF CORNER FOUND; EVIDENCE AND METHOD USED TO IDENTIFY OR REESTABLISH

FD. 1/4" IR. 20" SOUTH AND 25" E. OF NORTHWEST CORNER OF SECTION 4. USED SECTION
CORNER AT SOUTH WEST CORNER OF SECTION 4 (AS DESCRIBED IN BK 711 PG. 15 M.C.R.D.)
AND 1/8" IR. AT 1/4 CORNER ON NORTH LINE OF SECTION 4 & INTERSECTED POINT.

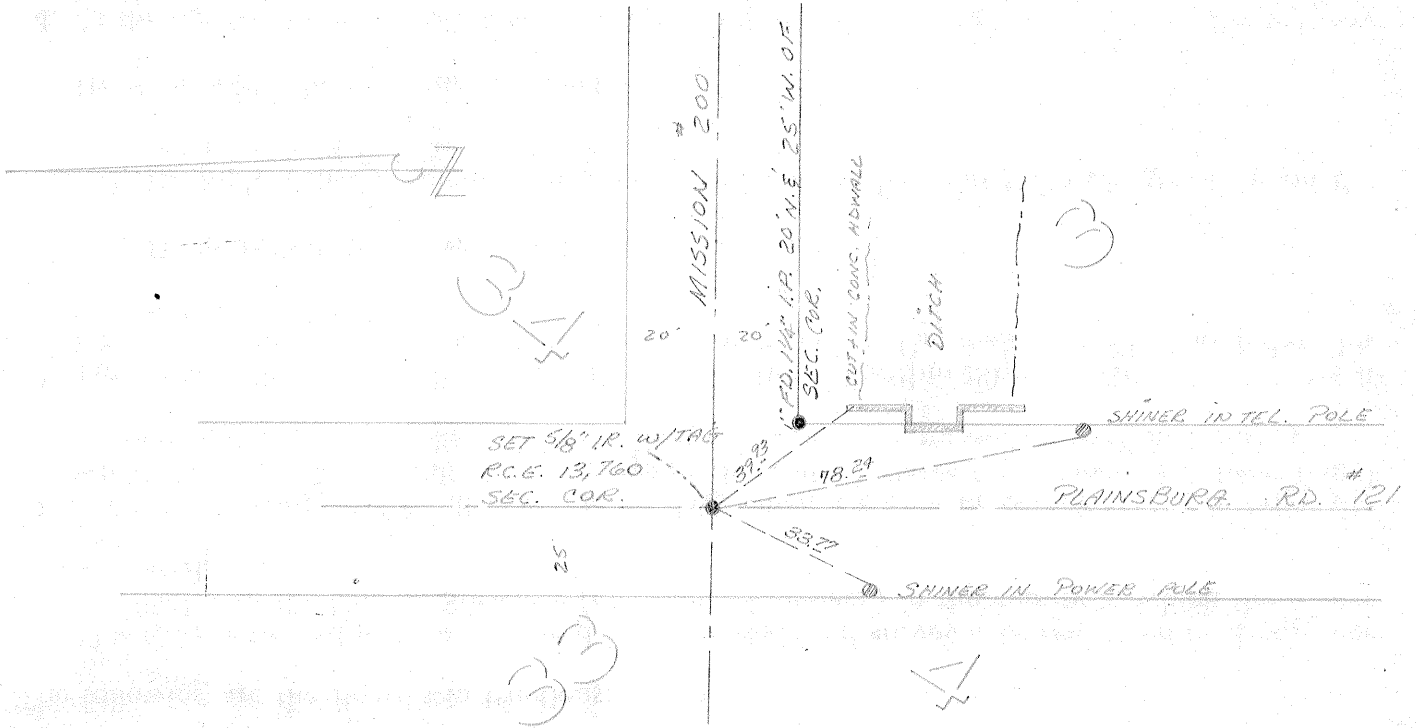
PHYSICAL DESCRIPTION OF MONUMENTS REBUILT OR PERPETUATED

SET 5/8" IR. WITH TAG R.C.E. 13760. SET FLUSH WITH PAVEMENT.

CALIFORNIA COORDINATE SYSTEM ORDER: FIRST SECOND THIRD
STATIONS USED: NGS (USC & GS) STATE COUNTY OTHER STATION _____ STATION _____
ZONE _____ ELEVATION _____ NORTHINGS (Y) _____ EASTINGS (X) _____

(Fold)

SKETCH: (Include reference tie or witness points, remarks and topo of area)



SURVEYOR'S CERTIFICATE

THIS CORNER RECORD WAS PREPARED BY ME OR UNDER MY DIRECTION IN CONFORMANCE WITH THE LAND SURVEYORS ACT ON _____ 19____.

SIGNED: _____

L.S. or R.C.E. No.: _____

SEAL

COUNTY SURVEYOR'S CERTIFICATE

THE CORNER RECORD WAS RECEIVED _____ 19____

AND EXAMINED AND FILED _____ 19____

BY: _____

TITLE: _____

DOCUMENT No. 38

STATEMENT ON BACK OF SHEET

YES NO