

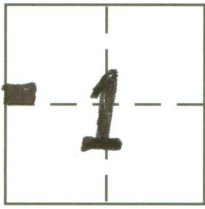
CORNER RECORD

Document Number 15-1

City of _____

County of MERCED, California

Brief Legal Description PARCEL 1 47 PM 26



CORNER TYPE

Government Corner Control
Meander Property
Rancho Other
Date of Survey 4-16-12

COORDINATES (Optional)

N. _____
E. _____
Zone _____ NAD27 NAD83
NAD83 Epoch _____
Elev. _____
Vert. Datum: NGVD29 NAVD88
Meas. Units: Metric Imperial

Corner - Left as found Found and tagged Established Reestablished Rebuilt

Identification and type of corner found: Evidence used to identify or procedure used to establish or reestablish the corner:

SEE SKETCH

A description of the physical condition of the monument as found and as set or reset:

SEE SKETCH

SURVEYOR'S STATEMENT

This Corner Record was prepared by me or under my direction in conformance with the Land Surveyor's Act on APRIL 30 2012

Signed Michael S. Morris P.L.S. or R.C.E. No. 8665



COUNTY SURVEYOR'S STATEMENT

This Corner Record was received May 1, 2012

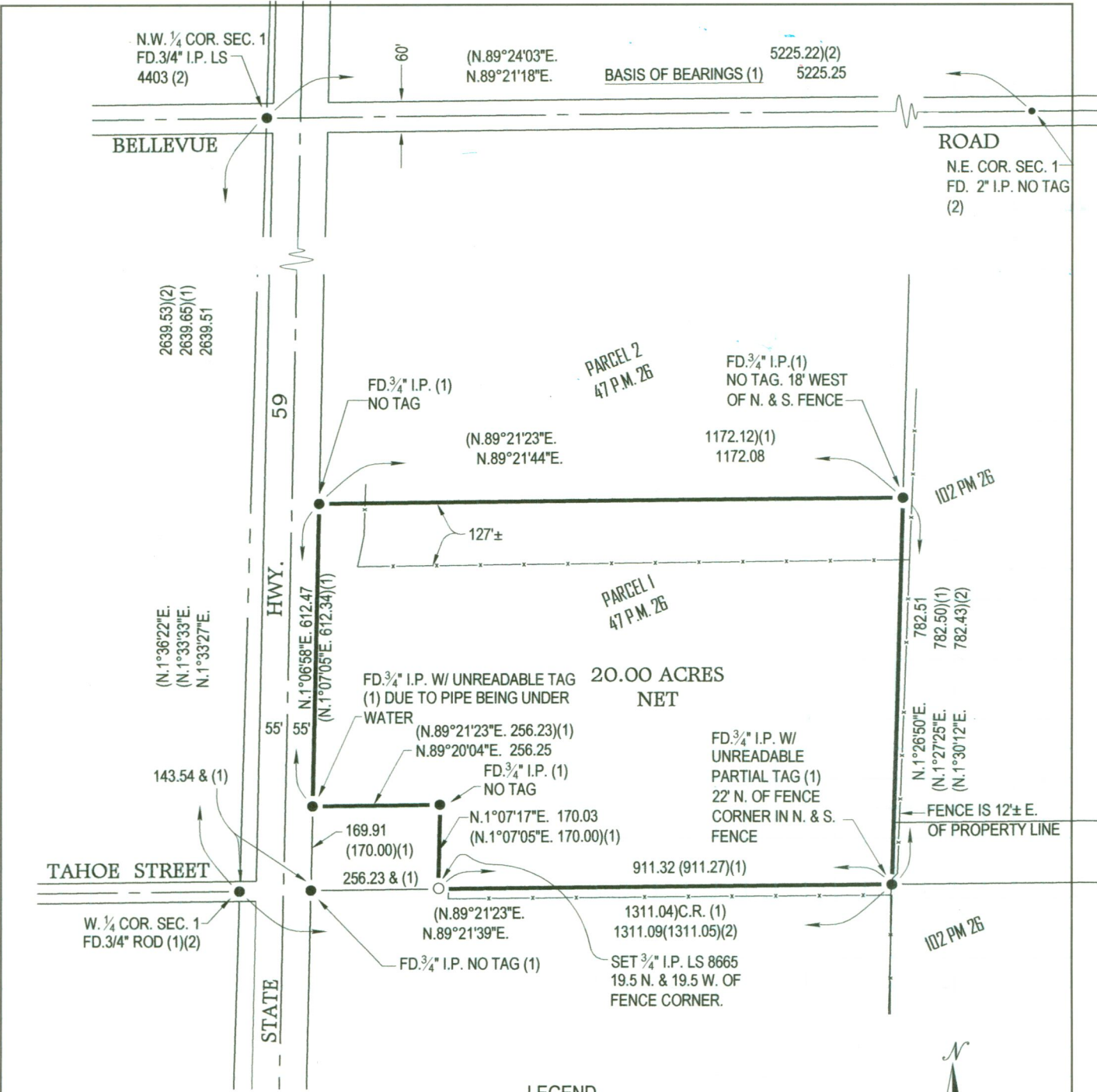
and examined and filed May 2, 2012

Signed J. Steven Reichmuth P.L.S. or ~~R.C.E.~~ No. 4895

Title Acting County Surveyor



County Surveyor's Comment _____

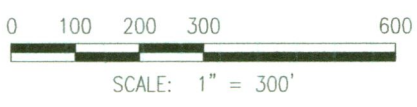


BASIS OF BEARINGS:

N.89°21'18"E. FOR THE CENTERLINE OF BELLEVUE ROAD AS SHOWN ON THE PARCEL MAP FOR ROBERTA T. ROBERTSON, RECORDED IN VOLUME 47 OF PARCEL MAPS AT PAGE 26, MERCED COUNTY RECORDS.

LEGEND

- FOUND AND ACCEPTED MONUMENT AS INDICATED
- SET 3/4" IRON PIPE, L.S. 8665



REFERENCE:

1. PARCEL MAP FOR ROBERTA T. ROBERTSON, 47 PM 26, M.C.R.
2. PARCEL MAP FOR RIENERO / NICCUM, 102 PM 26 M.C.R.