

CORNER RECORD

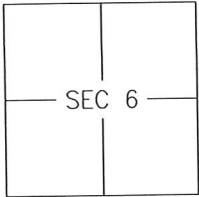
Agency Index 14-K

Document Number _____

City of MERCED

County of MERCED, California

BRIEF LEGAL DESCRIPTION LOTS 127-137 OF BELLEVUE RANCH EAST VILLAGE Q, 74-OP-48



T7S/R14E

CORNER TYPE

- Government Corner Control
 Meander Property
 Rancho Other

Date of Survey January 13, 2020

COORDINATES (Optional)

- N. _____ E. _____
 Elevation _____
 Units Metric U.S. Survey Foot
 Horizontal Datum _____
 Zone _____ Epoch Date _____
 Vertical Datum: _____
 Complies with Public Resources Code §§8801-8819
 Complies with Public Resources Code §§8890-8902

PLS Act Ref.: 8765(d) 8771 8773 Other: _____

Corner/Monument: Left as found Established Rebuilt Pre-Construction
 Found and tagged Reestablished Referenced Post-Construction

Narrative of corner identified and monument as found and set or reset:

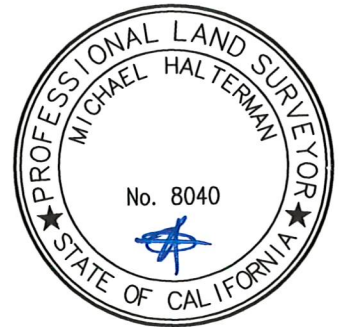
See sheet #2 for description(s):

RESET MONUMENTS DAMAGED DURING GRADING OPERATIONS.

SURVEYOR'S STATEMENT

This Corner Record was prepared by me or under my direction in conformance with the Land Surveyor's Act, on February 5th, 2020.

Signed [Signature] P.L.S. or R.C.E. No.: 8040



COUNTY SURVEYOR'S STATEMENT

This Corner Record was received FEBRUARY, 13th and examined and filed FEBRUARY, 14th.

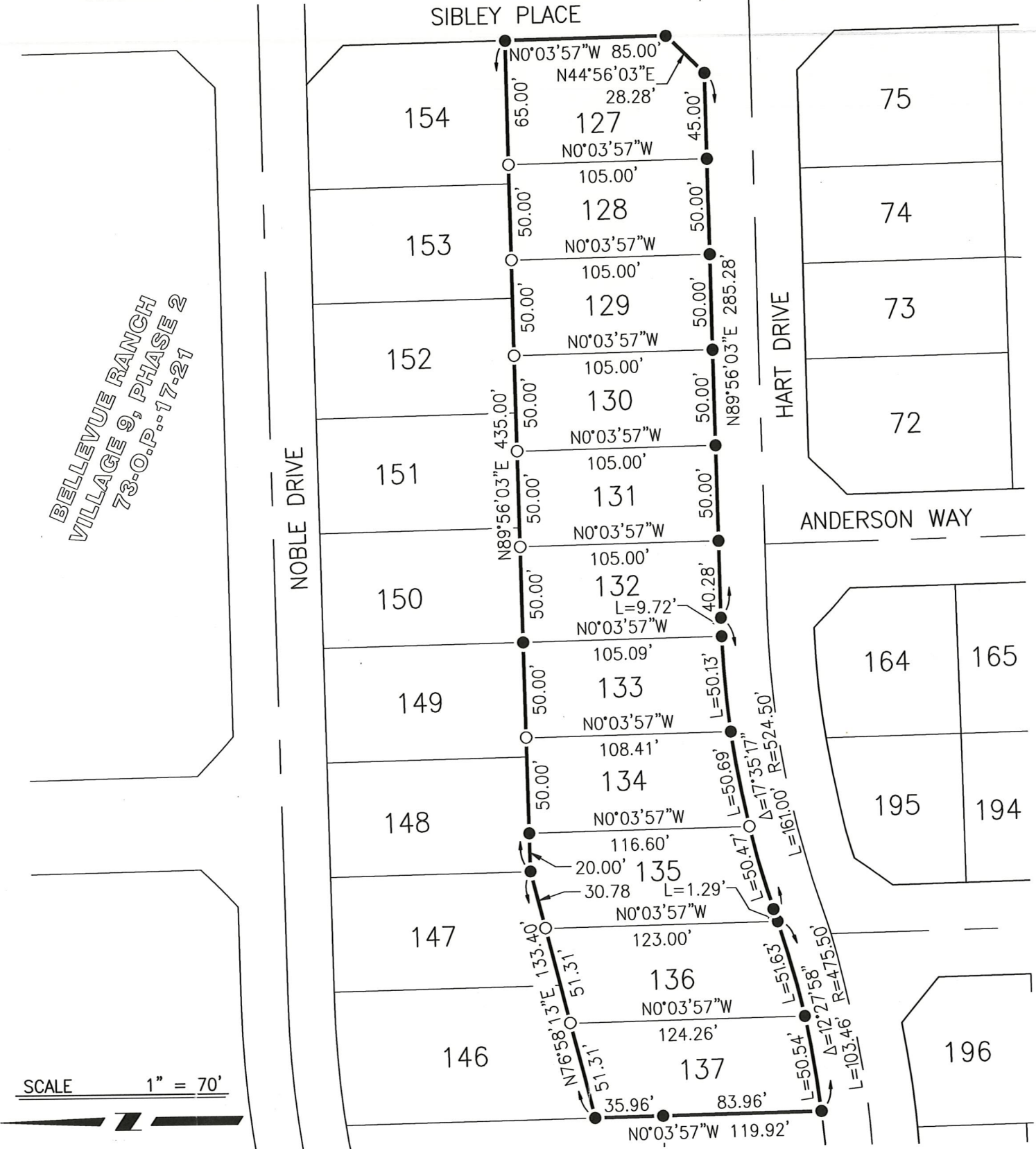
Signed Zach T. Janz P.L.S. or R.C.E. No.: 8664

Title COUNTY SURVEYOR

County Surveyor's Comment _____



**BELLEVUE RANCH
VILLAGE 9, PHASE 2
73-O.P.-17-21**



LEGEND:

- FOUND 3/4" IRON PIPE TAGGED LS 4914 PER 74-OP-48.
- SET 3/4" IRON PIPE TAGGED LS 8040 UNLESS NOTED OTHERWISE.