

# CORNER RECORD

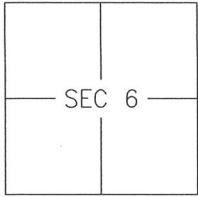
Agency Index 14-H

Document Number \_\_\_\_\_

City of MERCED

County of MERCED, California

Brief Legal Description LOTS 105-108 OF BELLEVUE RANCH EAST VILLAGE Q, 74-OP-48



T7S/R14E

### CORNER TYPE

- Government Corner  Control   
 Meander  Property   
 Rancho  Other

Date of Survey 2018-10-31

### COORDINATES (Optional)

- N. \_\_\_\_\_ E. \_\_\_\_\_  
 Elevation \_\_\_\_\_  
 Units Metric  U.S. Survey Foot   
 Horizontal Datum \_\_\_\_\_  
 Zone \_\_\_\_\_ Epoch Date \_\_\_\_\_  
 Vertical Datum: \_\_\_\_\_  
 Complies with Public Resources Code §§8801-8819  
 Complies with Public Resources Code §§8890-8902

PLS Act Ref.:  8765(d)  8771  8773 Other: \_\_\_\_\_

Corner/Monument:  Left as found  Established  Rebuilt  Pre-Construction  
 Found and tagged  Reestablished  Referenced  Post-Construction

Narrative of corner identified and monument as found and set or reset:

See sheet #2 for description(s):

NO MONUMENTS WERE FOUND FOR THE REAR (EASTERLY) LOT CORNERS OF LOTS 105-108. SET WITNESS CORNERS TO BE INSIDE (WESTERLY) OF THE MASONRY WALL.

### SURVEYOR'S STATEMENT

This Corner Record was prepared by me or under my direction in conformance with the Land Surveyor's Act on 14 FEBRUARY, 2019.

Signed [Signature] P.L.S. or R.C.E. No.: 8040



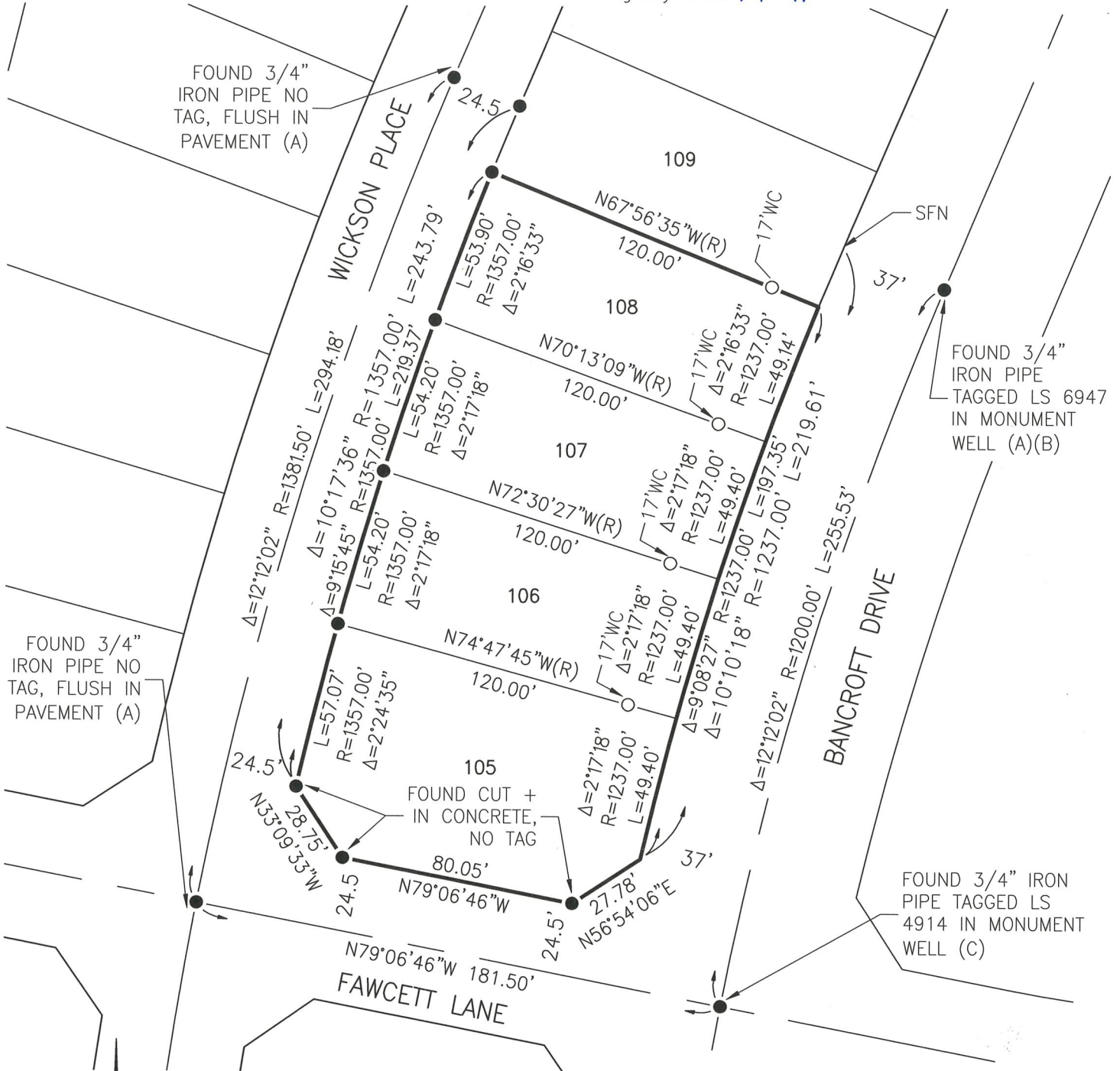
### COUNTY SURVEYOR'S STATEMENT

This Corner Record was received FEBRUARY 20, 2019 and examined and filed FEBRUARY 20, 2019.

Signed Zach T Janz P.L.S. or R.C.E. No.: 8664  
 Title COUNTY SURVEYOR



County Surveyor's Comment \_\_\_\_\_



REFERENCE

- (A) BELLEVUE RANCH EAST VILLAGE Q, VOLUME 74 OF OFFICIAL PLATS PAGES 48-58
- (B) BELLEVUE RANCH EAST-PHASE 1, VOLUME 61 OF OFFICIAL PLATS, PAGES 21-29
- (C) BELLEVUE RANCH EAST-VILLAGE 7, VOLUME 75 OF OFFICIAL PLATS, PAGES 37-45

SCALE

1" = 50'

LEGEND:

- FOUND 3/4" IRON PIPE MONUMENT WITH TAG "LS 4914" PER (A), UNLESS NOTED OTHERWISE
- SET 3/4" IRON PIPE, TAGGED LS 8040, AS A WITNESS CORNER AT DISTANCE INDICATED
- SFN SEARCHED FOUND NOTHING