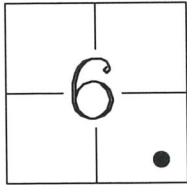


CORNER RECORD

Agency Index 14-F
 Document Number _____

City of MERCED County of MERCED, California
 Brief Legal Description LOT 118 AS SHOWN ON BELLEVUE RANCH EAST - VILLAGE 7, 75 O.P. 37 SECTION 6, TOWNSHIP 7 SOUTH, RANGE 14 EAST, M.D.B.&M.



CORNER TYPE
 Government Corner Control
 Meander Property
 Rancho Other

COORDINATES (Optional)
 N. _____ E. _____
 Elevation _____
 Units Metric U.S. Survey Foot
 Horizontal Datum _____
 Zone _____ Epoch Date _____
 Vertical Datum _____
 Complies with Public Resources Code §§8801-8819
 Complies with Public Resources Code §§8890-8902

Date of Survey JUNE 25, 2018

PLS Act Ref.: 8765(d) 8771 8773 Other
 Corner/Monument: Left as found Established Rebuilt Pre-Construction
 Found and tagged Reestablished Referenced Post-Construction

Narrative of corner identified and monument as found, set, reset, replaced, or removed:
 See sheet #2 for description(s):
 REESTABLISHED THE COMMON FRONT CORNER BETWEEN LOTS 118 & 119 OF TRACT NO. 5335, RECORDED IN BOOK 75 OF OFFICIAL PLATS, AT PAGES 37 THROUGH 45, MERCED COUNTY RECORDS, USING EXISTING MONUMENTS WITHIN THE SUBDIVISION TO RE-ESTABLISH THE POSITION.

SURVEYOR'S STATEMENT

This Corner Record was prepared by me or under my direction in conformance with the Professional Land Surveyor's Act on JULY 7, 2018.

Signed [Signature] P.L.S. 5277



COUNTY SURVEYOR'S STATEMENT

This corner record was received JULY 16, 2018
 and examined and filed JULY 19, 2018.

Signed Zachary T. Janz P.L.S. or R.C.E. No. 8664
 Title COUNTY SURVEYOR

County Surveyor's Comment



LEGEND:

() INDICATES RECORD DATA AS SHOWN ON, THE MAP OF TRACT NO. 5335, RECORDED IN BOOK 75 OF OFFICIAL PLATS, AT PAGES 37 THROUGH 45, MERCED COUNTY RECORDS.

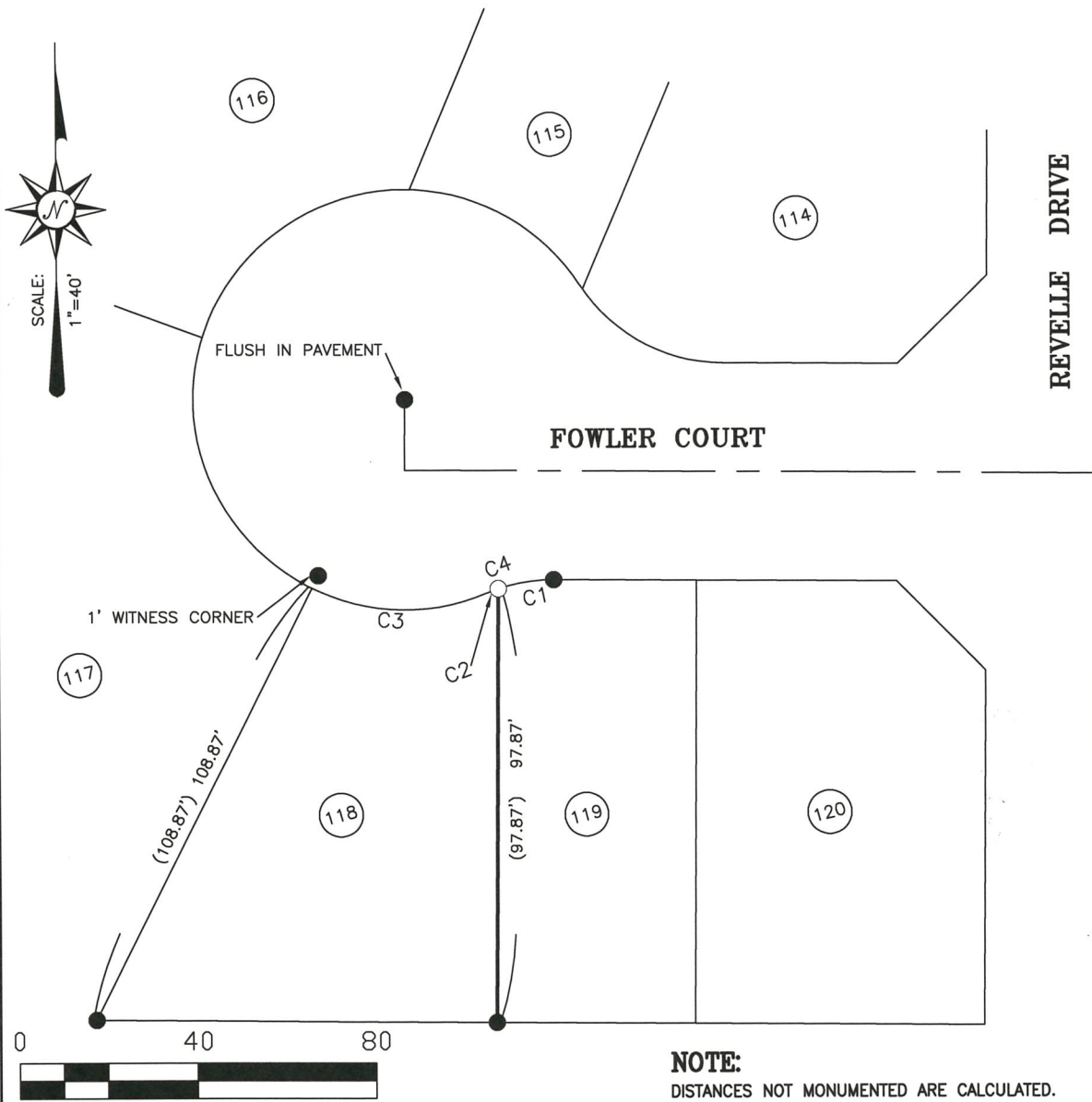
① INDICATES RECORD LOT NUMBER PER THE MAP OF TRACT NO. 5335, RECORDED IN BOOK 75 OF OFFICIAL PLATS, AT PAGES 37 THROUGH 45, MERCED COUNTY RECORDS.

● INDICATES FOUND AND ACCEPTED 3/4" IRON PIPE, DOWN 4", TAGGED L.S. 4914, PER 75 O.P. 37

○ INDICATES SET 3/4"x30" IRON PIPE, TAGGED L.S.5277, FLUSH.



CURVE	ARC LENGTH		RADIUS	
C2	(2.78')	2.78'	(38.50')	38.50'
C1	(12.86)	12.86'	(38.50')	38.50'
C3	(40.88')	40.88'	(47.50')	47.50'
C4	(15.64')	15.64'	(38.50')	38.50'



NOTE:
DISTANCES NOT MONUMENTED ARE CALCULATED.