

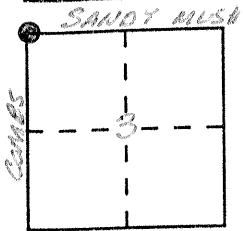
CORNER RECORD

Document Number 12

City of _____

County of MERCED, California

Brief Legal Description NORTHWEST CORNER SECTION 3 T.9S.R.13E.



CORNER TYPE

Government Corner Control
 Meander Property
 Rancho Other
 Date of Survey AUGUST 1997

COORDINATES (Optional)

N. _____
 E. _____
 Zone _____ Datum _____
 Elev. _____

Corner — Left as found Found and tagged Established Reestablished Rebuilt

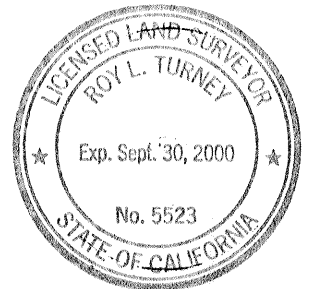
Identification and type of corner found: Evidence used to identify or procedure used to establish or reestablish the corner:
FD. 3/4" IRON PIPE 1' DOWN BROUGHT TO SURFACE WITH 5/8" REBAR TAGGED
MERCED COUNTY SURVEYOR (SEE REVERSE SIDE FOR SWING TIES)
POINT TIED OUT AUGUST 1997 PRIOR TO A PAVING EFFORT BY MERCED
COUNTY. MONUMENT WELL SET OVER 5/8" REBAR

A description of the physical condition of the monument as found and as set or reset: THESE TIES ARE FOR
THE PURPOSE OF PERPETUATING THE FOUND MONUMENTATION. NO CLAIM
IS MADE AS TO THE RELATIONSHIP OF THE POINT OR LINE SHOWN
HEREIN TO THE BOUNDARY LOCATIONS

SURVEYOR'S STATEMENT

This Corner Record was prepared by me or under my direction in conformance with the Land Surveyors' Act on 10-1 1997.

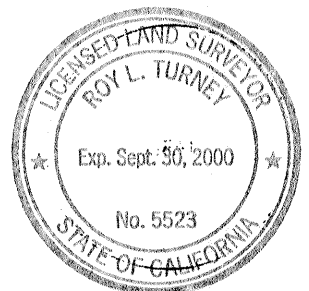
Signed Roy L. Turney L.S. or R.C.E. Number 5523



COUNTY SURVEYOR'S STATEMENT

This Corner Record was received 10-1 1997 and examined and filed 10-1 1997.

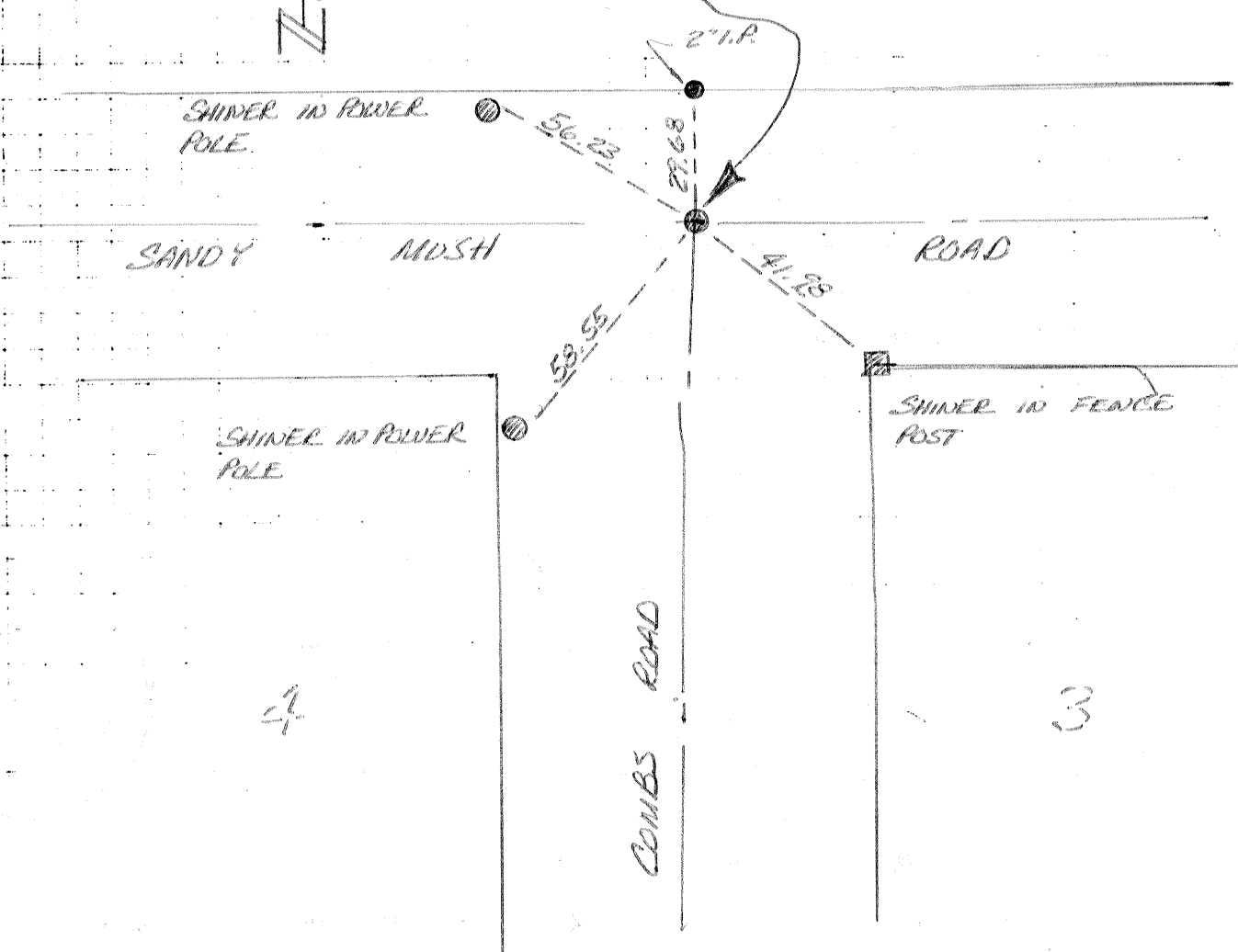
Signed Roy L. Turney Title DEP CO SUR.



County Surveyor's Comment _____

T. 85, R. 13 E. M.D. B&M

FOUND 3/4" IRON PIPE 1' DOWN
PER FIELD 717 PG 32 BROUGHT
UP WITH 5/8" REBAR TAGGED
MERCED COUNTY SURVEYOR IN
MONUMENT WELL



T. 95, R. 13 E. M.D. B&M.