

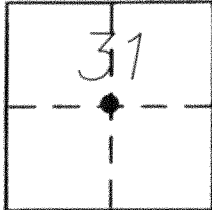
CORNER RECORD

Document Number 11-TTT

City of MERCED

County of MERCED, California

Brief Legal Description CENTERLINE INTERSECTION OF GERARD AVENUE AND THE SOUTHERLY PROJECTION OF THE WEST LINE OF TRACT 1227, PHASE "A", 52 O.P. 9, M.C.R.



T7S, R14E

CORNER TYPE

Government Corner Control
Meander Property
Rancho Other
Date of Survey 12/21/2012

COORDINATES (Optional)

N. _____
E. _____
Zone _____ NAD27 NAD83
NAD83 Epoch _____
Elev. _____
Vert. Datum: NGVD29 NAVD88
Meas. Units: Metric Imperial

Corner - Left as found Found and tagged Established Reestablished Rebuilt

Identification and type of corner found: Evidence used to identify or procedure used to establish or reestablish the corner:

FOUND 3/4" IRON PIPE WITH L.S. 3707 TAG, IN A MONUMENT WELL,
394.68' EAST OF THE CENTERLINE INTERSECTION OF GERARD AVENUE AND AMY STREET
1 1/4" IRON PIPE WITH L.S. 3707 TAG, IN A MONUMENT WELL, SHOWN ON 52 O.P. 9, M.C.R.
ALSO FOUND ON 58 O.P. 9, M.C.R.
MONUMENTS MAY BE DESTROYED WITH CONSTRUCTION PROJECT.

A description of the physical condition of the monument as found and as set or reset: _____

SURVEYOR'S STATEMENT

This Corner Record was prepared by me or under my direction in conformance with the Land Surveyor's Act on JANUARY 25, 2013

Signed [Signature] PLS or R.G.E. No. 7621



COUNTY SURVEYOR'S STATEMENT

This Corner Record was received January 25, 2013

and examined and filed February 4, 2013

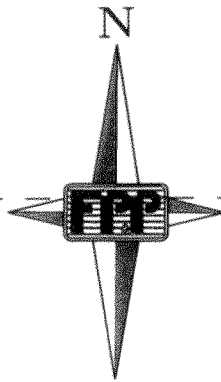
Signed [Signature] PLS or R.G.E. No. 4895

Title Acting County Surveyor

County Surveyor's Comment _____



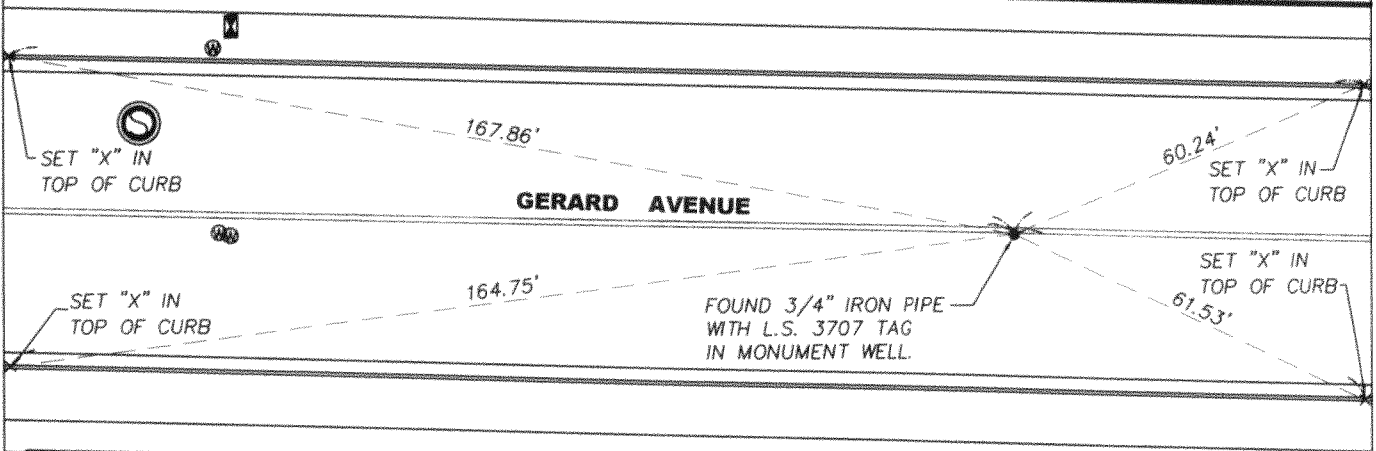
CONNIE COURT



SCALE 1" = 30'

TRACT 1227
PHASE B
52 O.P. 25

TRACT 1227
PHASE A
52 O.P. 9



TRACT 1234
PHASE F
58 O.P. 8