

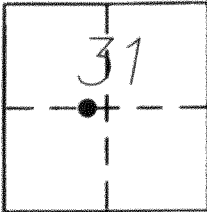
CORNER RECORD

Document Number 11-555

City of MERCED

County of MERCED, California

Brief Legal Description CENTERLINE INTERSECTION OF GERARD AVENUE AND AMY STREET



T7S, R14E

CORNER TYPE

Government Corner Control
 Meander Property
 Rancho Other
 Date of Survey 12-21-2012

COORDINATES (Optional)

N. _____
 E. _____
 Zone _____ NAD27 NAD83
 NAD83 Epoch _____
 Elev. _____
 Vert. Datum: NGVD29 NAVD88
 Meas. Units: Metric Imperial

Corner - Left as found Found and tagged Established Reestablished Rebuilt

Identification and type of corner found: Evidence used to identify or procedure used to establish or reestablish the corner:

FOUND 3/4" IRON PIPE WITH L.S. 6406 TAG, IN A MONUMENT WELL,

1 1/4" IRON PIPE WITH L.S. 3707 TAG, IN A MONUMENT WELL, SHOWN ON 53 O.P. 33, M.C.R.

ALSO FOUND ON 58 O.P. 9, M.C.R.

MONUMENT MAY BE DESTROYED WITH CONSTRUCTION PROJECT.

A description of the physical condition of the monument as found and as set or reset: _____

SURVEYOR'S STATEMENT

This Corner Record was prepared by me or under my direction in conformance with
 the Land Surveyor's Act on JANUARY 25, 2013

Signed [Signature] P.L.S or R.C.E. No. 7621



COUNTY SURVEYOR'S STATEMENT

This Corner Record was received January 25, 2013

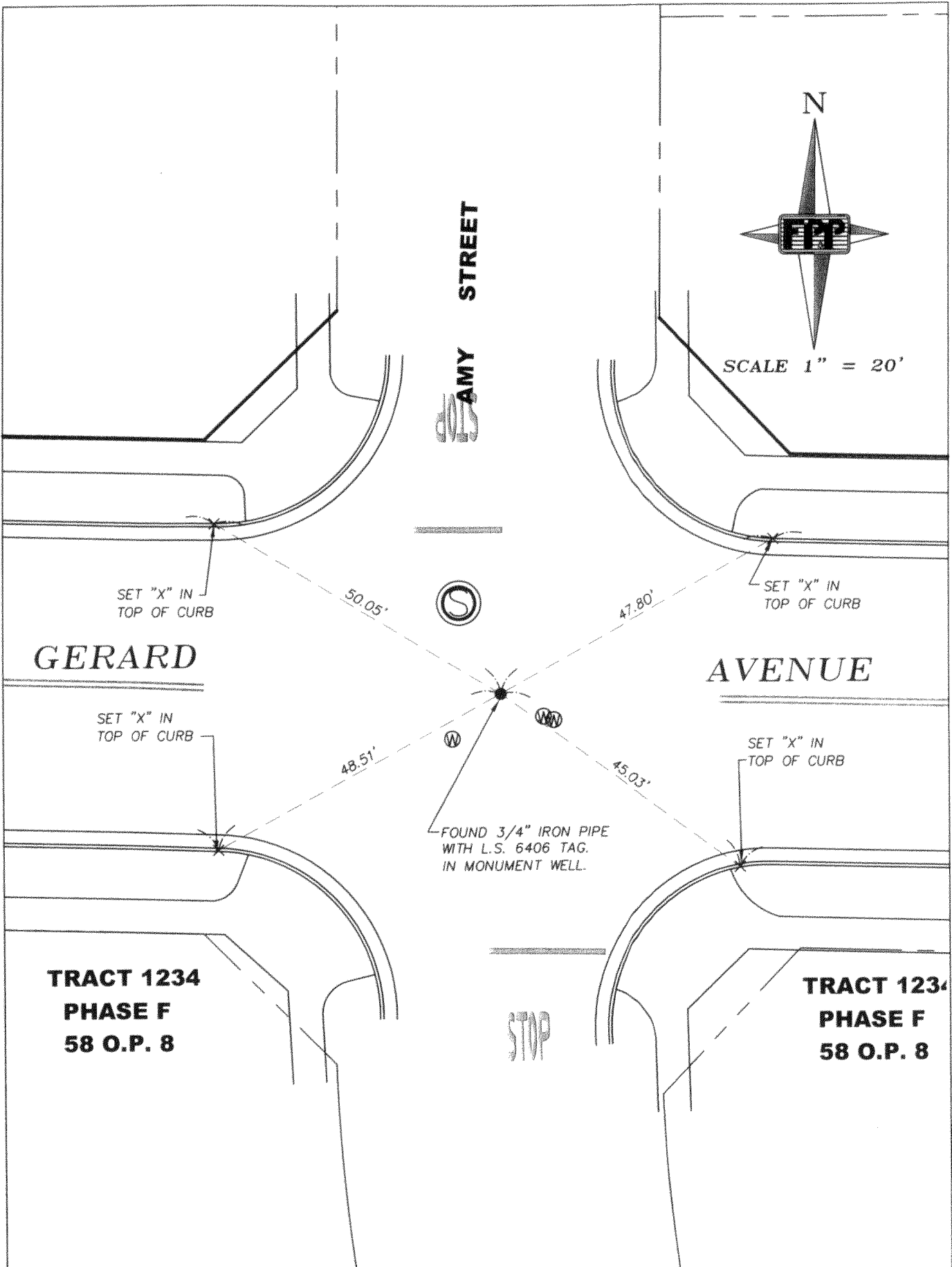
and examined and filed February 4, 2013

Signed [Signature] P.L.S or R.C.E. No. 4895

Title Acting County Surveyor

County Surveyor's Comment _____





GERARD

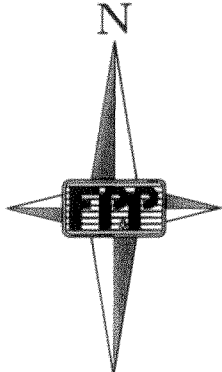
AVENUE

AMY STREET

**TRACT 1234
PHASE F
58 O.P. 8**

**TRACT 1234
PHASE F
58 O.P. 8**

FOUND 3/4" IRON PIPE
WITH L.S. 6406 TAG.
IN MONUMENT WELL.



SCALE 1" = 20'

SET "X" IN
TOP OF CURB

SET "X" IN
TOP OF CURB

SET "X" IN
TOP OF CURB

SET "X" IN
TOP OF CURB

50.05'

47.80'

48.51'

45.03'

STOP