

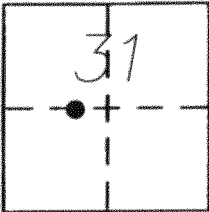
# CORNER RECORD

Document Number 11-RRR

City of MERCED

County of MERCED, California

Brief Legal Description CENTERLINE INTERSECTION OF GERARD AVENUE AND THE SOUTHERLY PROJECTION OF THE EAST LINE OF TRACT 1227, PHASE "D", 54 O.P. 31, M.C.R.



T7S, R14E

### CORNER TYPE

Government Corner  Control   
 Meander  Property   
 Rancho  Other   
 Date of Survey 12/21/2012

### COORDINATES (Optional)

N. \_\_\_\_\_  
 E. \_\_\_\_\_  
 Zone \_\_\_\_\_ NAD27  NAD83   
 NAD83 Epoch \_\_\_\_\_  
 Elev. \_\_\_\_\_  
 Vert. Datum: NGVD29  NAVD88   
 Meas. Units: Metric  Imperial

Corner - Left as found  Found and tagged  Established  Reestablished  Rebuilt

Identification and type of corner found: Evidence used to identify or procedure used to establish or reestablish the corner:

FOUND 3/4" IRON PIPE WITH L.S. 6406 TAG, IN A MONUMENT WELL, AS SHOWN ON 54 O.P. 31, M.C.R.

131.53' WEST OF THE CENTERLINE INTERSECTION OF GERARD AVENUE AND AMY STREET

MONUMENTS MAY BE DESTROYED WITH CONSTRUCTION PROJECT.

A description of the physical condition of the monument as found and as set or reset: \_\_\_\_\_

### SURVEYOR'S STATEMENT

This Corner Record was prepared by me or under my direction in conformance with the Land Surveyor's Act on JANUARY 25, 2013

Signed [Signature] P.L.S or R.G.E. No. 7621



### COUNTY SURVEYOR'S STATEMENT

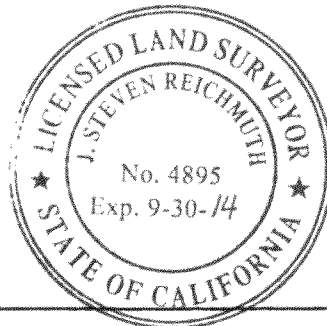
This Corner Record was received January 25, 2013

and examined and filed February 4, 2013

Signed [Signature] P.L.S or R.G.E. No. 4895

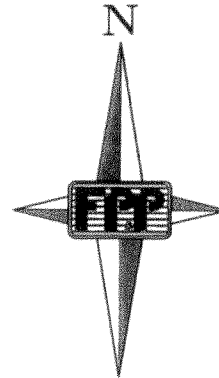
Title Acting County Surveyor

County Surveyor's Comment \_\_\_\_\_

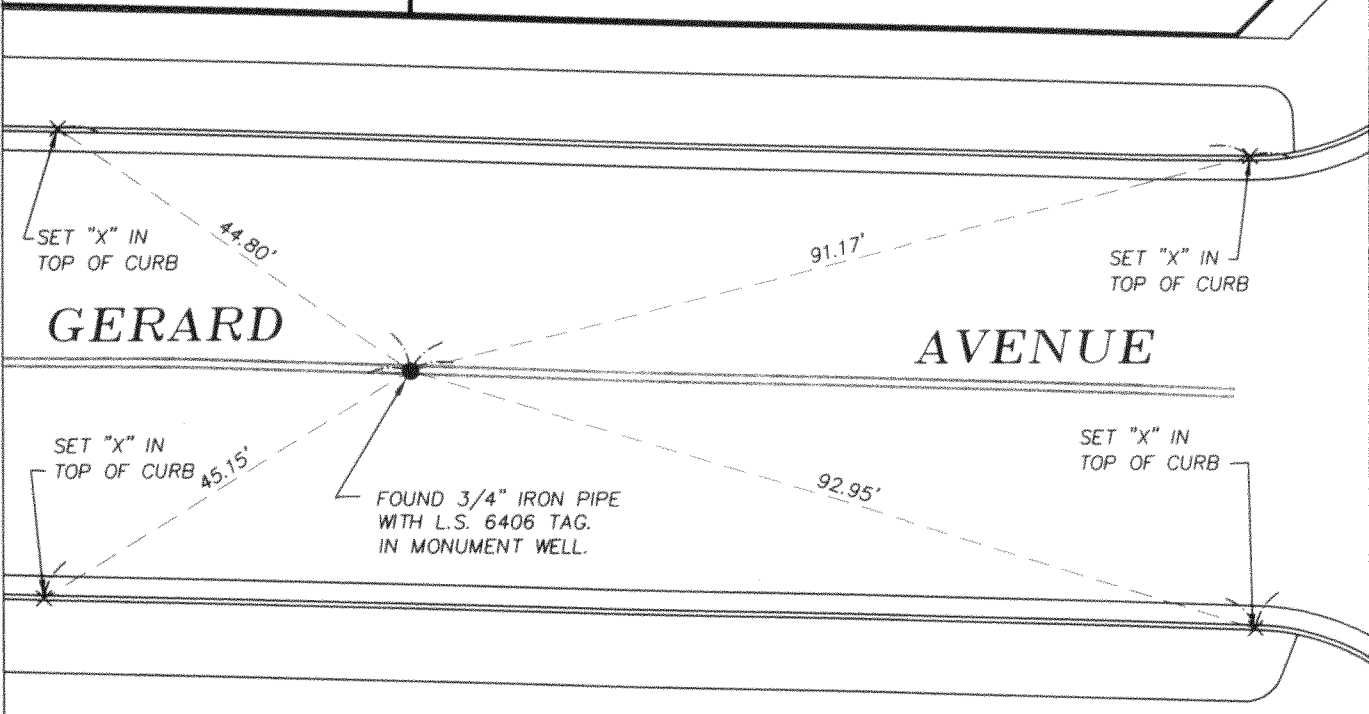


**TRACT 1227  
PHASE D  
54 O.P. 31**

**TRACT 1227  
PHASE C  
53 O.P. 33**



SCALE 1" = 20'



**TRACT 1234  
PHASE F  
58 O.P. 8**