

CORNER RECORD

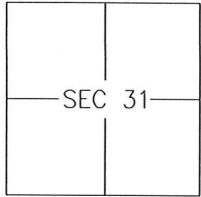
Agency Index 11-K4

Document Number _____

City of MERCED

County of MERCED, California

Brief Legal Description LOTS 100-101 OF 75-OP-21



T7S/R14E

CORNER TYPE

- Government Corner Control
 Meander Property
 Rancho Other

Date of Survey 2019-05-22

COORDINATES (Optional)

- N. _____ E. _____
 Elevation _____
 Units Metric U.S. Survey Foot
 Horizontal Datum _____
 Zone _____ Epoch Date _____
 Vertical Datum: _____
 Complies with Public Resources Code §§8801-8819
 Complies with Public Resources Code §§8890-8902

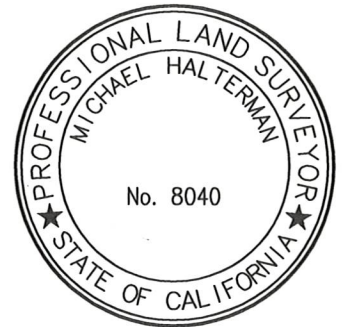
PLS Act Ref.: 8765(d) 8771 8773 Other: _____

Corner/Monument: Left as found Established Rebuilt Pre-Construction
 Found and tagged Reestablished Referenced Post-Construction

Narrative of corner identified and monument as found and set or reset:
 See sheet #2 for description(s):

SURVEYOR'S STATEMENT

This Corner Record was prepared by me or under my direction in conformance with the Land Surveyor's Act on 14 JUNE, 2019.
 Signed [Signature] P.L.S. or R.C.E. No.: 8040

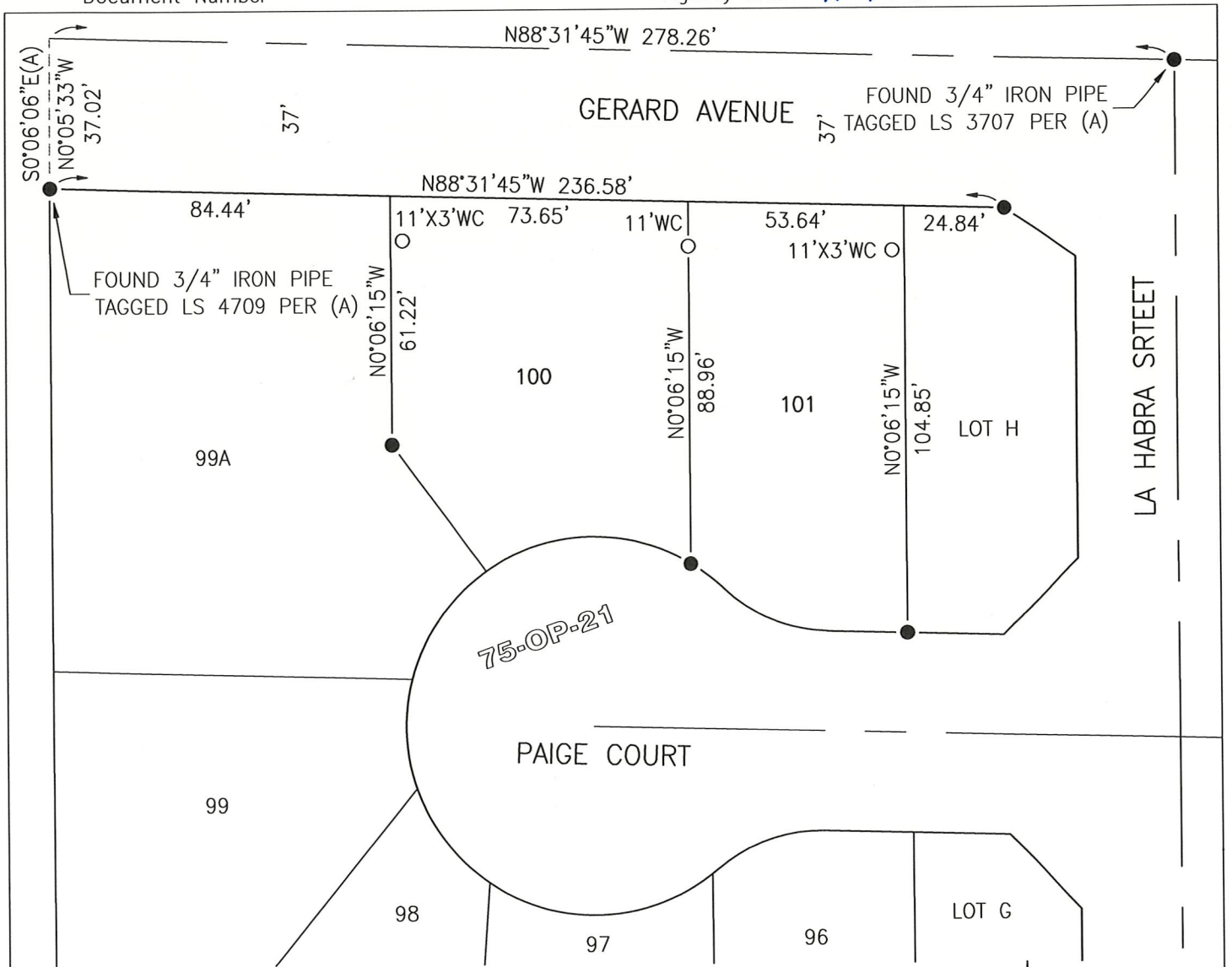


COUNTY SURVEYOR'S STATEMENT

This Corner Record was received JUNE 18, 2019 and examined and filed JUNE 18, 2019.
 Signed Zachary T. Janz P.L.S. or R.C.E. No.: 8664
 Title COUNTY SURVEYOR



County Surveyor's Comment _____



REFERENCES

(A) CYPRESS TERRACE EAST, VOLUME 75 OF OFFICIAL PLATS, PAGES 21-26, M.C.R.

SCALE 1" = 40'

LEGEND

- FOUND 3/4" IRON PIPE TAGGED LS 6944 PER (A), UNLESS NOTED OTHERWISE
- SET 3/4" x 24" IRON PIPE, WITH PLASTIC PLUG STAMPED LS 8040
- WC WITNESS CORNER