

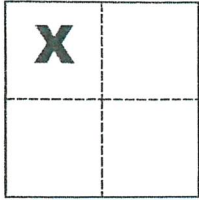
CORNER RECORD

Agency Index 11-H4 (2)
Document Number _____

City of Merced County of Merced, California
Brief Legal Description SE Cor. of Lot 12 per 30 O.P. 27, M.C.R.

CORNER TYPE

COORDINATES (Optional)



Government Corner Control
Meander Property
Rancho Other

N. _____ E. _____
Elevation _____
Units Metric U.S. Survey Foot
Horizontal Datum _____
Zone _____ Epoch Date _____
Vertical Datum _____

Date of Survey May 21, 2018

Sec. 31, T.7S., R.14E.,
M.D.B. & M.

Complies with Public Resources Code §§8801-8819

Complies with Public Resources Code §§8890-8902

PLS Act Ref.: 8765(d) 8771 8773 Other:
Corner/Monument: Left as found Established Rebuilt Pre-Construction
 Found and tagged Reestablished Referenced Post-Construction

Narrative of corner identified and monument as found, set, reset, replaced, or removed:
 See sheet #2 for description(s):

SURVEYOR'S STATEMENT

This Corner Record was prepared by me or under my direction in conformance with
the Professional Land Surveyors' Act on May 21, 2018

Signed Michael L. Quarantoni P.L.S. or R.C.E. No. L.S. 4450



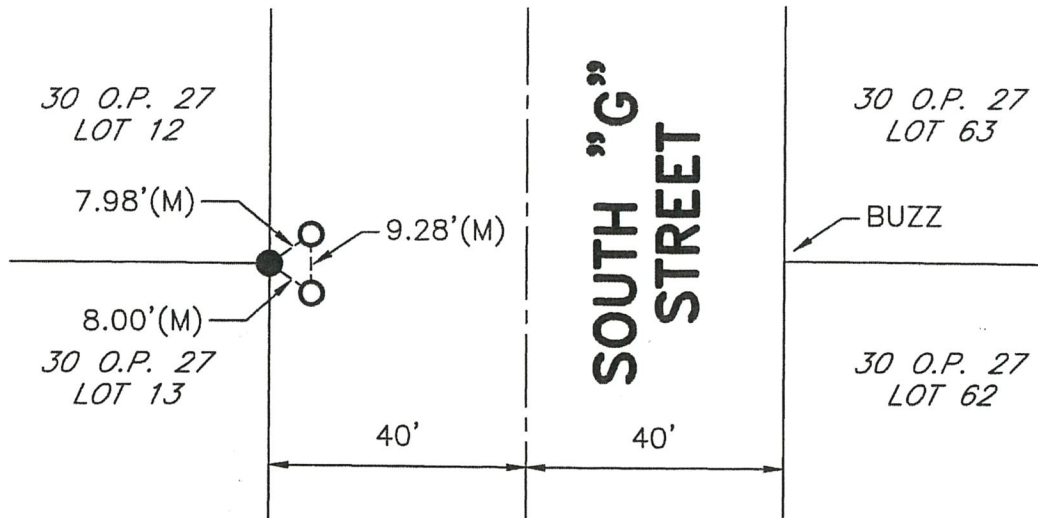
COUNTY SURVEYOR'S STATEMENT

This Corner Record was received MAY 21, 2018
and examined and filed MAY 29, 2018

Signed Zachary T. Janz P.L.S. or R.C.E. No. 8664
Title COUNTY SURVEYOR

County Surveyor's Comment



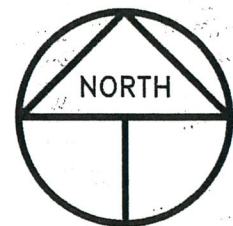


LEGEND

- INDICATES FOUND LEAD AND TACK WITH TAG STAMPED LS 4450
- INDICATES FOUND 3/4" IRON PIPE PER (A), 17.5' WEST FROM BOC
- (M) INDICATES MEASURED ON THIS SURVEY
- O.P. INDICATES OFFICIAL PLAT, VOLUME AND PAGE, M.C.R.
- M.C.R. INDICATES MERCED COUNTY RECORDS
- BOC INDICATES BACK OF CURB

REFERENCE

(A) 30 O.P. 27, M.C.R.



SCALE: 1" = 30'
2018-90