

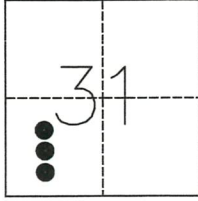
CORNER RECORD

Agency Index 11-64

Document Number _____

City of MERCED County of MERCED, California

Brief Legal Description PROPERTY CORNERS OF LOTS 63, 64, 65 & 66, 76-O.P.-6, M.C.R.



T.7S., R.14E.

CORNER TYPE

- Government Corner Control
- Meander Property
- Rancho Other

Date of Survey JANUARY 15, 2017

COORDINATES (Optional)

N. _____ E. _____

Elevation _____

Units Metric U.S. Survey Foot

Horizontal Datum _____

Zone _____ Epoch Date _____

Vertical Datum _____

Complies with Public Resources Code §§8801-8819

Complies with Public Resources Code §§8890-8902

PLS Act Ref.: 8765(d) 8771 8773 Other:

Corner/Monument: Left as found Established Rebuilt Pre-Construction

Found and tagged Reestablished Referenced Post-Construction

Narrative of corner identified and monument as found, set, reset, replaced, or removed:

See sheet #2 for description(s):

SURVEYOR'S STATEMENT

This Corner Record was prepared by me or under my direction in conformance with

the Professional Land Surveyors' Act on 1-17-2018

Signed [Signature] P.L.S. or R.C.E. No. 9417



COUNTY SURVEYOR'S STATEMENT

This Corner Record was received JANUARY 17, 2018

and examined and filed FEBRUARY 8, 2018

Signed Zach T. Janz P.L.S. or R.C.E. No. 8664

Title COUNTY SURVEYOR

County Surveyor's Comment



FOUND 3/4" IRON PIPE WITH L.S. 4052 TAG(A)

LEGEND

- MONUMENT FOUND AS 3/4" IRON PIPE WITH L.S. 4052 TAG AS SHOWN ON 76-O.P.-6, M.C.R.
- ▲ MONUMENT FOUND AS 3/4" IRON PIPE WITH L.S. 7621 TAG AS A 1.00' WITNESS CORNER ON LOT SIDE LINES PER CORNER RECORD 11-E4, FILED AT MERCED COUNTY SURVEYOR'S OFFICE.

264.11 ALL MEASUREMENTS ARE IN FEET AND DECIMAL FRACTIONS THEREOF.

(A) REFERENCE DATA

M. C. R. MERCED COUNTY RECORDS

BOUNDARY LINE



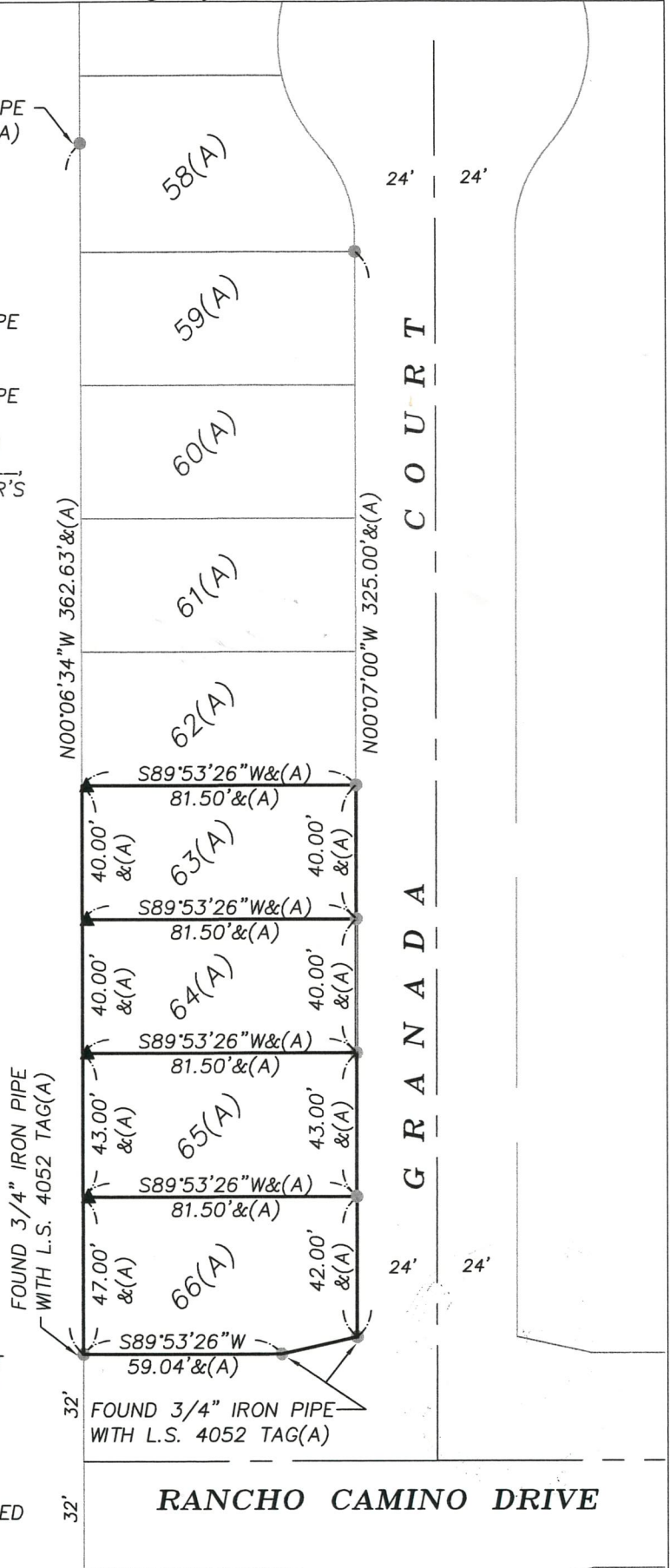
SCALE: 1" = 50'

BASIS OF BEARING

THE BEARING OF N0°06'34"W ALONG THE WEST LINE OF LOTS 58 - 66, AS SHOWN ON (A), IS THE BASIS FOR ALL BEARINGS SHOWN ON THIS MAP.

REFERENCES

(A) MISSION RANCH PHASE 1, 76 O.P. 6, MERCED COUNTY RECORDS.



RANCHO CAMINO DRIVE