

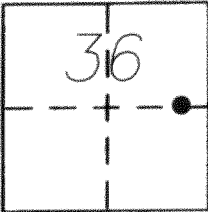
CORNER RECORD

Document Number 6-00

City of MERCED

County of MERCED, California

Brief Legal Description CENTERLINE INTERSECTION OF GERARD AVENUE AND SAN JUAN BAUTISTA AVENUE



T7S, R13E

CORNER TYPE

Government Corner  Control   
Meander  Property   
Rancho  Other   
Date of Survey 12/21/2012

COORDINATES (Optional)

N. \_\_\_\_\_  
E. \_\_\_\_\_  
Zone          NAD27  NAD83   
NAD83 Epoch \_\_\_\_\_  
Elev. \_\_\_\_\_  
Vert. Datum: NGVD29  NAVD88   
Meas. Units: Metric  Imperial

Corner - Left as found  Found and tagged  Established  Reestablished  Rebuilt

Identification and type of corner found: Evidence used to identify or procedure used to establish or reestablish the corner:

FOUND 3/4" IRON PIPE WITH L.S. 4709 TAG IN MONUMENT WELL PER 62 O.P. 37, M.C.R.

MONUMENT MAY BE DESTROYED WITH CONSTRUCTION PROJECT.

A description of the physical condition of the monument as found and as set or reset:

SURVEYOR'S STATEMENT

This Corner Record was prepared by me or under my direction in conformance with the Land Surveyor's Act on JANUARY 25, 2013

Signed David D. Heinrichs P.L.S or R.C.E. No. 7621



COUNTY SURVEYOR'S STATEMENT

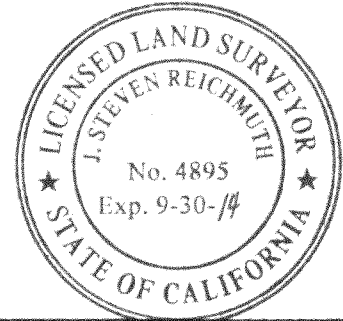
This Corner Record was received JANUARY 25, 2013

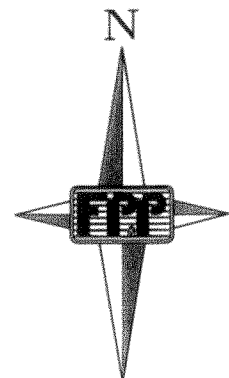
and examined and filed February 4, 2013

Signed J. Steven Reichmuth P.L.S or R.C.E. No. 4895

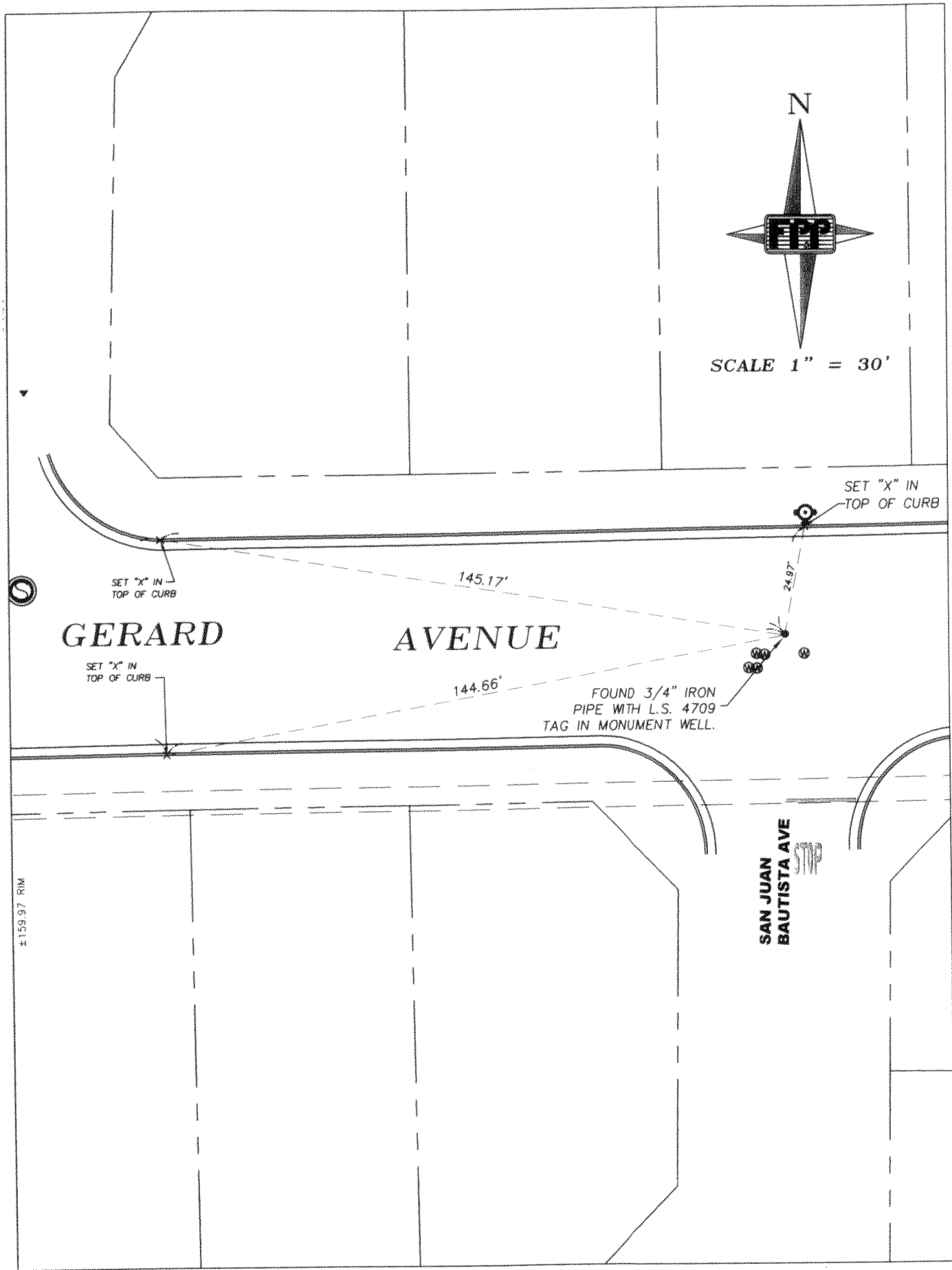
Title Acting County Surveyor

County Surveyor's Comment \_\_\_\_\_





SCALE 1" = 30'



# GERARD AVENUE

SET "X" IN TOP OF CURB

SET "X" IN TOP OF CURB

SET "X" IN TOP OF CURB

145.17'

144.66'

24.97'

FOUND 3/4" IRON PIPE WITH L.S. 4709 TAG IN MONUMENT WELL.

±159.97 RIM

SAN JUAN BAUTISTA AVE STOP