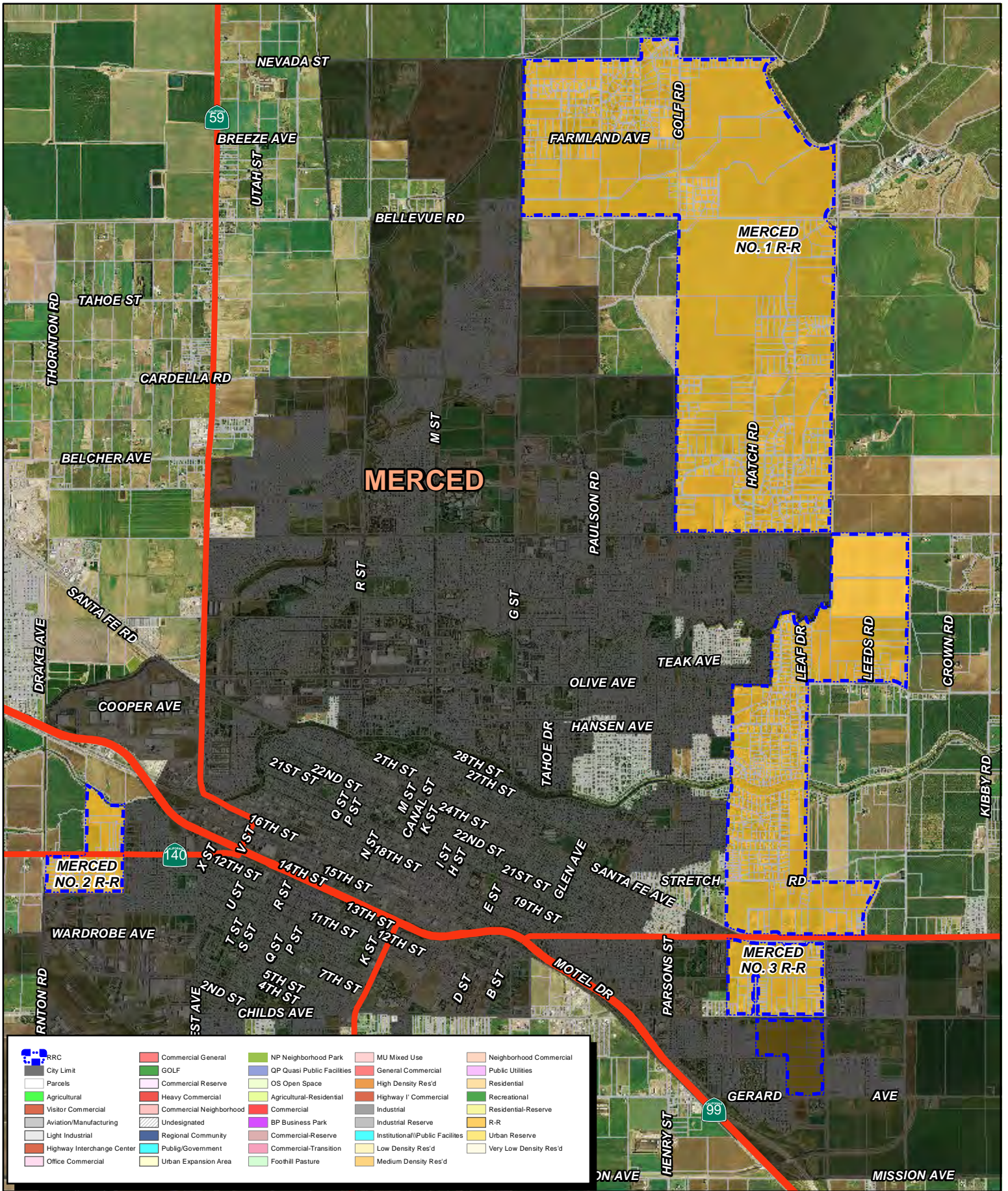
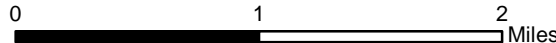


General Plan - Merced Rural Residential Center



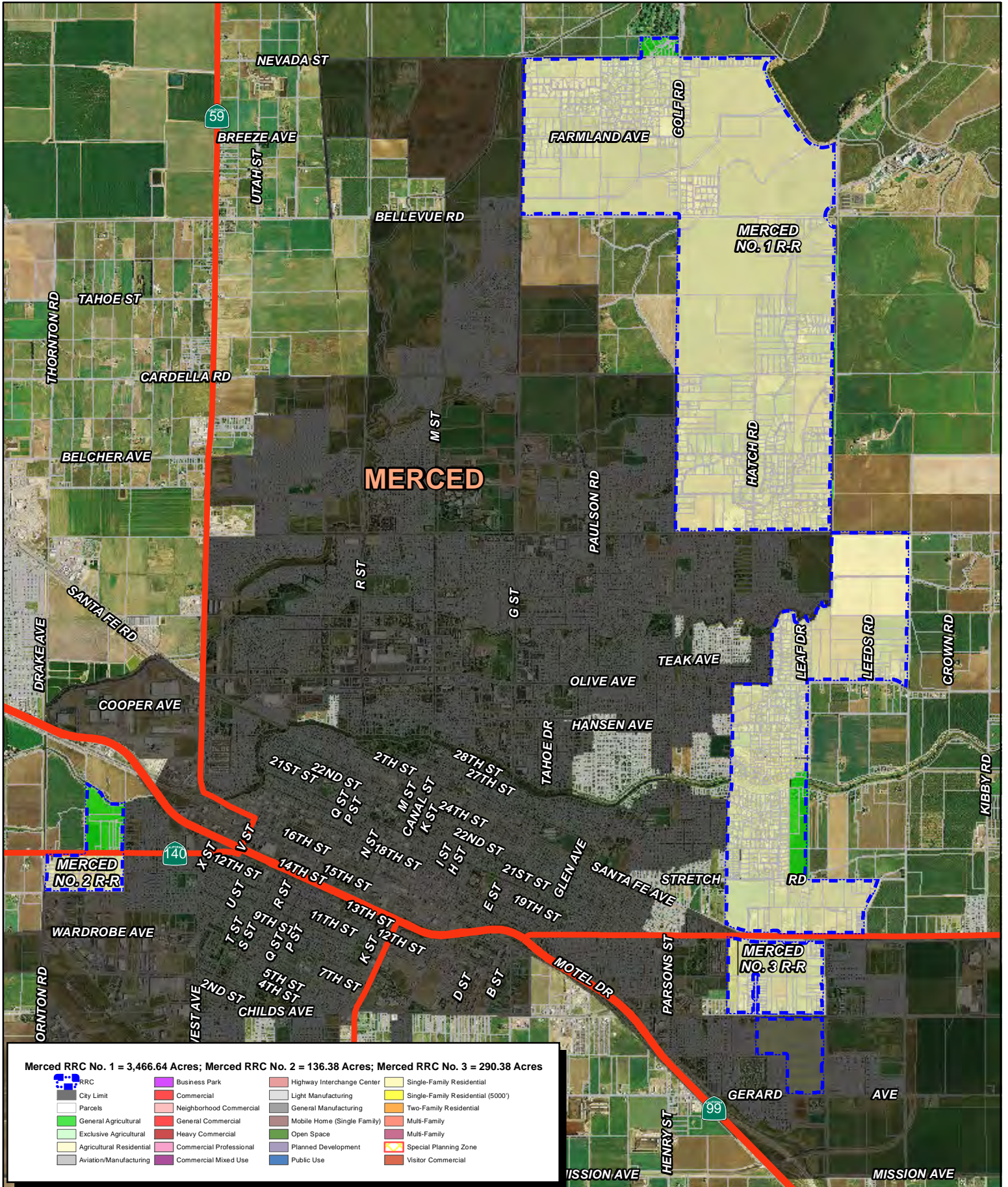
| | | | | |
|----------------------------|-------------------------|----------------------------|---------------------------------|-------------------------|
| RRC | Commercial General | NP Neighborhood Park | MU Mixed Use | Neighborhood Commercial |
| City Limit | GOLF | QP Quasi Public Facilities | General Commercial | Public Utilities |
| Parcels | Commercial Reserve | OS Open Space | High Density Res'd | Residential |
| Agricultural | Heavy Commercial | Agricultural-Residential | Highway I' Commercial | Recreational |
| Visitor Commercial | Commercial Neighborhood | Commercial | Industrial | Residential-Reserve |
| Aviation/Manufacturing | Undesignated | BP Business Park | Industrial Reserve | R-R |
| Light Industrial | Regional Community | Commercial-Reserve | Institutional/Public Facilities | Urban Reserve |
| Highway Interchange Center | Public/Government | Commercial-Transition | Low Density Res'd | Very Low Density Res'd |
| Office Commercial | Urban Expansion Area | Foothill Pasture | Medium Density Res'd | |



PRODUCED BY MERCED COUNTY PLANNING AND COMMUNITY DEVELOPMENT DEPARTMENT
 Disclaimer: The information displayed on this map is for reference purposes only. Any questions regarding this map should be directed to the Merced County Planning & Community Development Department.

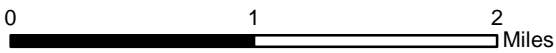


Zoning - Merced Rural Residential Center



Merced RRC No. 1 = 3,466.64 Acres; Merced RRC No. 2 = 136.38 Acres; Merced RRC No. 3 = 290.38 Acres

- | | | | |
|--------------------------|-------------------------|-----------------------------|-----------------------------------|
| RRC | Business Park | Highway Interchange Center | Single-Family Residential |
| City Limit | Commercial | Light Manufacturing | Single-Family Residential (5000') |
| Parcels | Neighborhood Commercial | General Manufacturing | Two-Family Residential |
| General Agricultural | General Commercial | Mobile Home (Single Family) | Multi-Family |
| Exclusive Agricultural | Heavy Commercial | Open Space | Multi-Family |
| Agricultural Residential | Commercial Professional | Planned Development | Special Planning Zone |
| Aviation/Manufacturing | Commercial Mixed Use | Public Use | Visitor Commercial |



PRODUCED BY MERCED COUNTY PLANNING AND COMMUNITY DEVELOPMENT DEPARTMENT
 Disclaimer: The information displayed on this map is for reference purposes only. Any questions regarding this map should be directed to the Merced County Planning & Community Development Department.