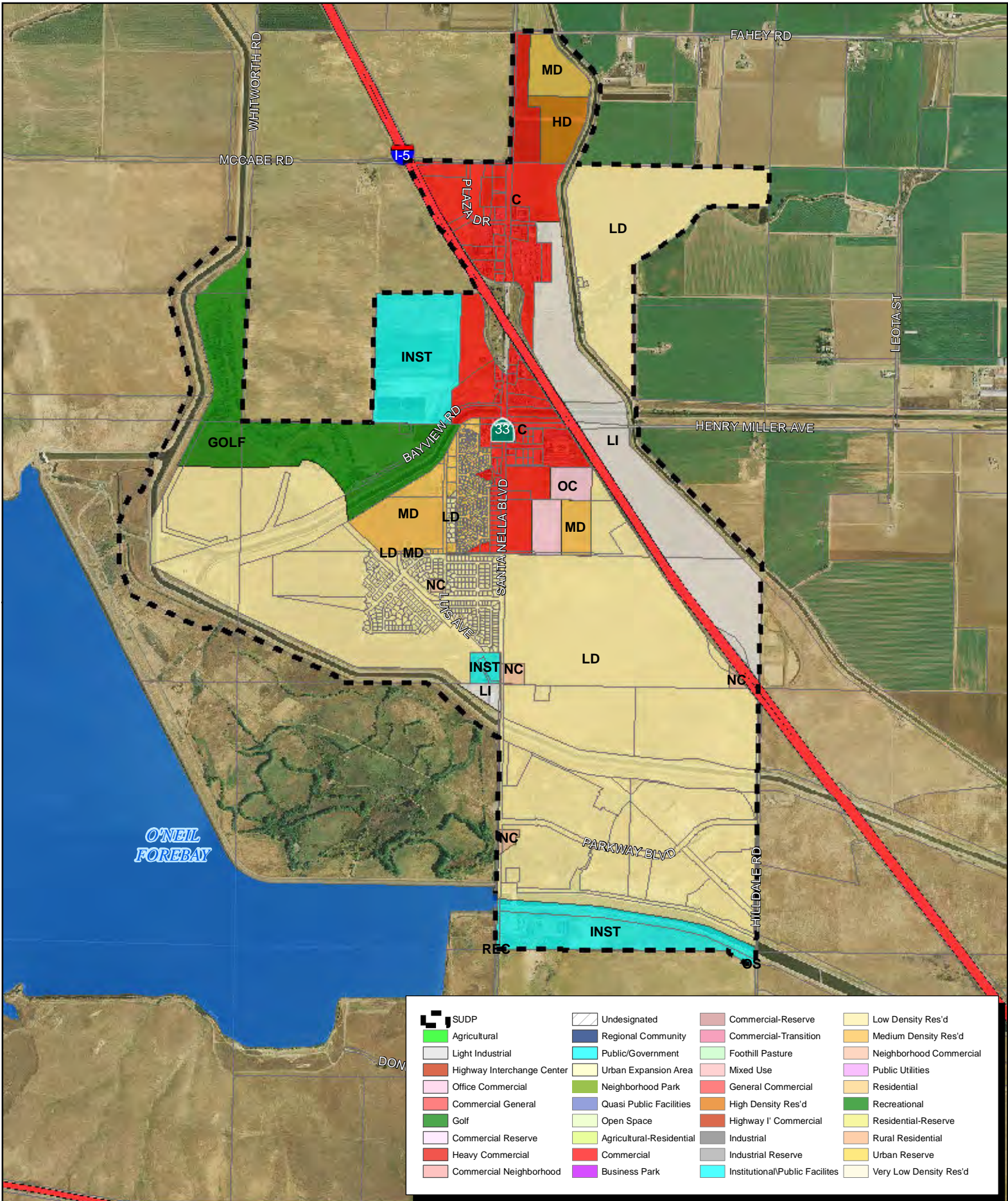
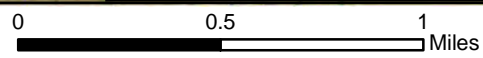


General Plan - Community of Santa Nella

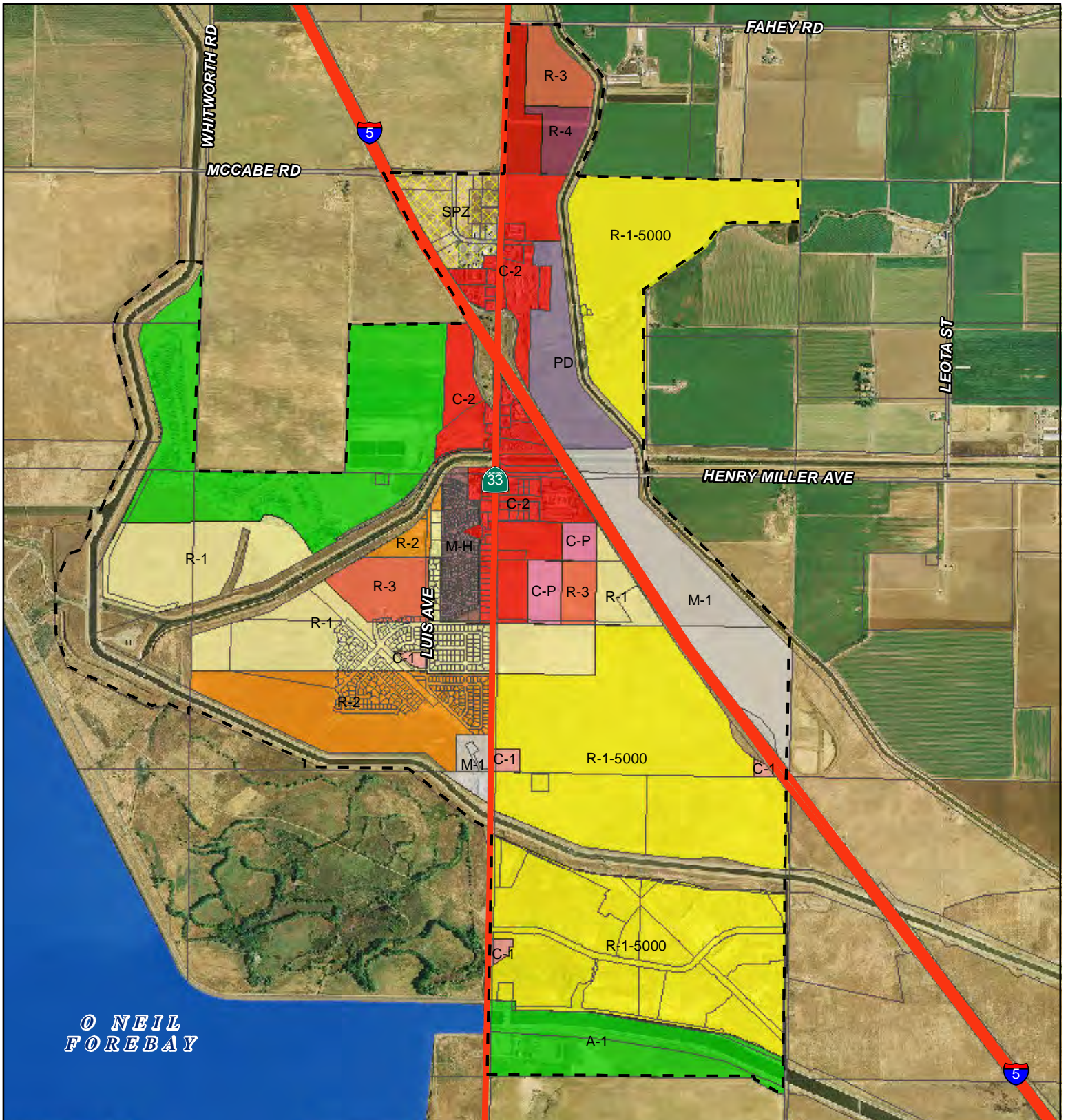


SUDP	Undesignated	Commercial-Reserve	Low Density Res'd
Agricultural	Regional Community	Commercial-Transition	Medium Density Res'd
Light Industrial	Public/Government	Foothill Pasture	Neighborhood Commercial
Highway Interchange Center	Urban Expansion Area	Mixed Use	Residential
Office Commercial	Neighborhood Park	General Commercial	Recreational
Commercial General	Quasi Public Facilities	High Density Res'd	Residential-Reserve
Golf	Open Space	Highway I' Commercial	Rural Residential
Commercial Reserve	Agricultural-Residential	Industrial Reserve	Urban Reserve
Heavy Commercial	Commercial	Institutional/Public Facilities	Very Low Density Res'd
Commercial Neighborhood	Business Park		



PRODUCED BY MERCED COUNTY PLANNING AND COMMUNITY DEVELOPMENT DEPARTMENT
 Disclaimer: The information displayed on this map is for reference purposes only. Any questions regarding this map should be directed to the Merced County Planning & Community Development Department.

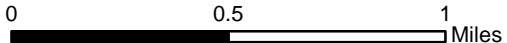
Zoning - Community of Santa Nella



SUDP = 2847.67 ACRES	C-1, Neighborhood Commercial	M-2, General Manufacturing	R-2, Two-Family Residential
A-1, General Agricultural	C-2, General Commercial	M-H, Mobile Home (Single Family)	R-3, Multi-Family
A-2, Exclusive Agricultural	C-3, Heavy Commercial	OS, Open Space	R-4, Multi-Family
A-R, Agricultural Residential	C-P, Commercial Professional	PD, Planned Development	SPZ, Special Planning Zone
AM, Aviation/Manufacturing	CMU, Commercial Mixed Use	PU, Public Use	VC, Visitor Commercial
BP, Business Park	H-I-C, Highway Interchange Center	R-1, Single-Family Residential	
C, Commercial	M-1, Light Manufacturing	R-1-5000, Single-Family Residential (5000')	



Development Services Division - GIS
August 2, 2010 - MA



PRODUCED BY MERCED COUNTY PLANNING AND COMMUNITY DEVELOPMENT DEPARTMENT
Disclaimer: The information displayed on this map is for reference purposes only. Any questions regarding this map should be directed to the Merced County Planning & Community Development Department.

