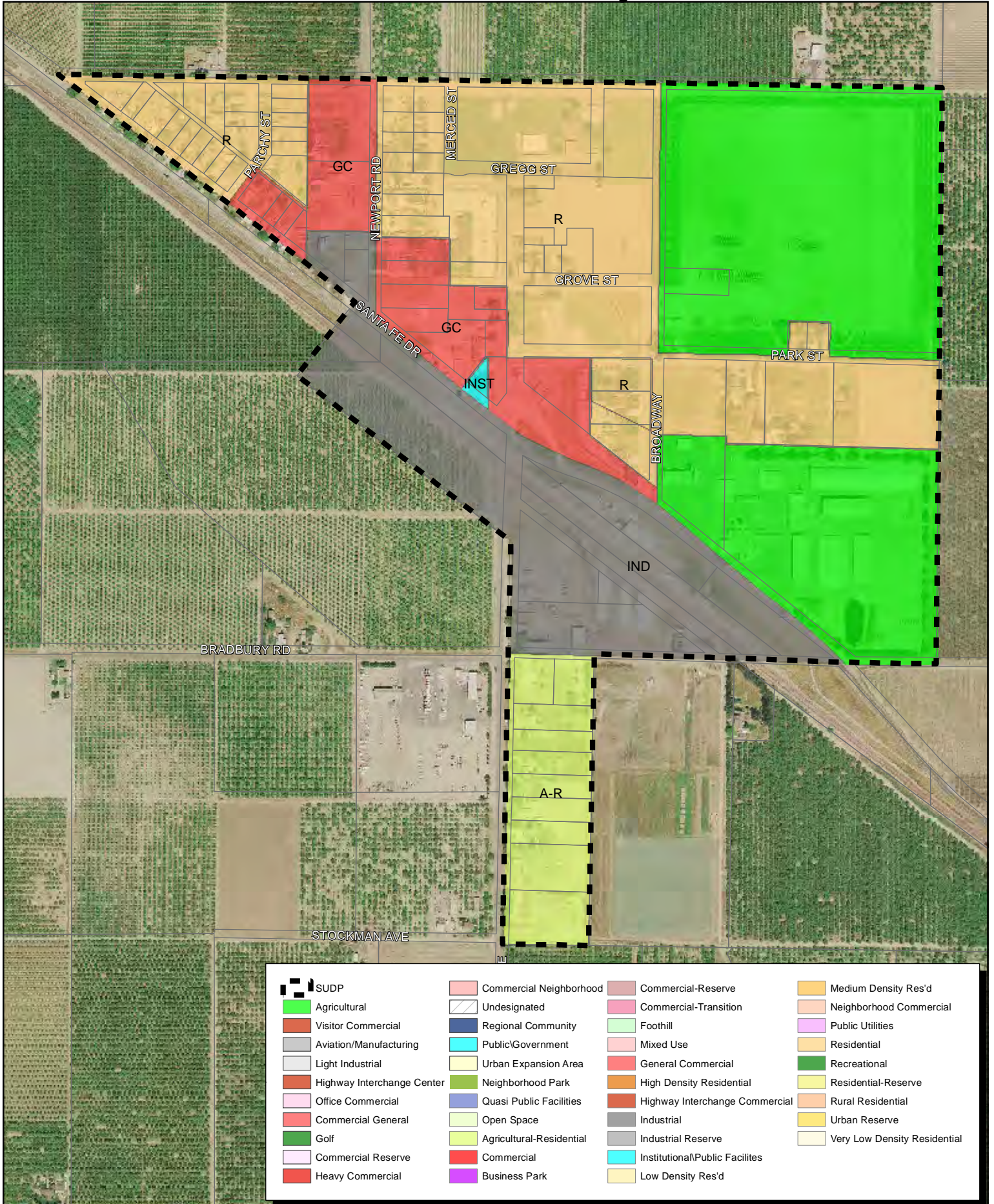
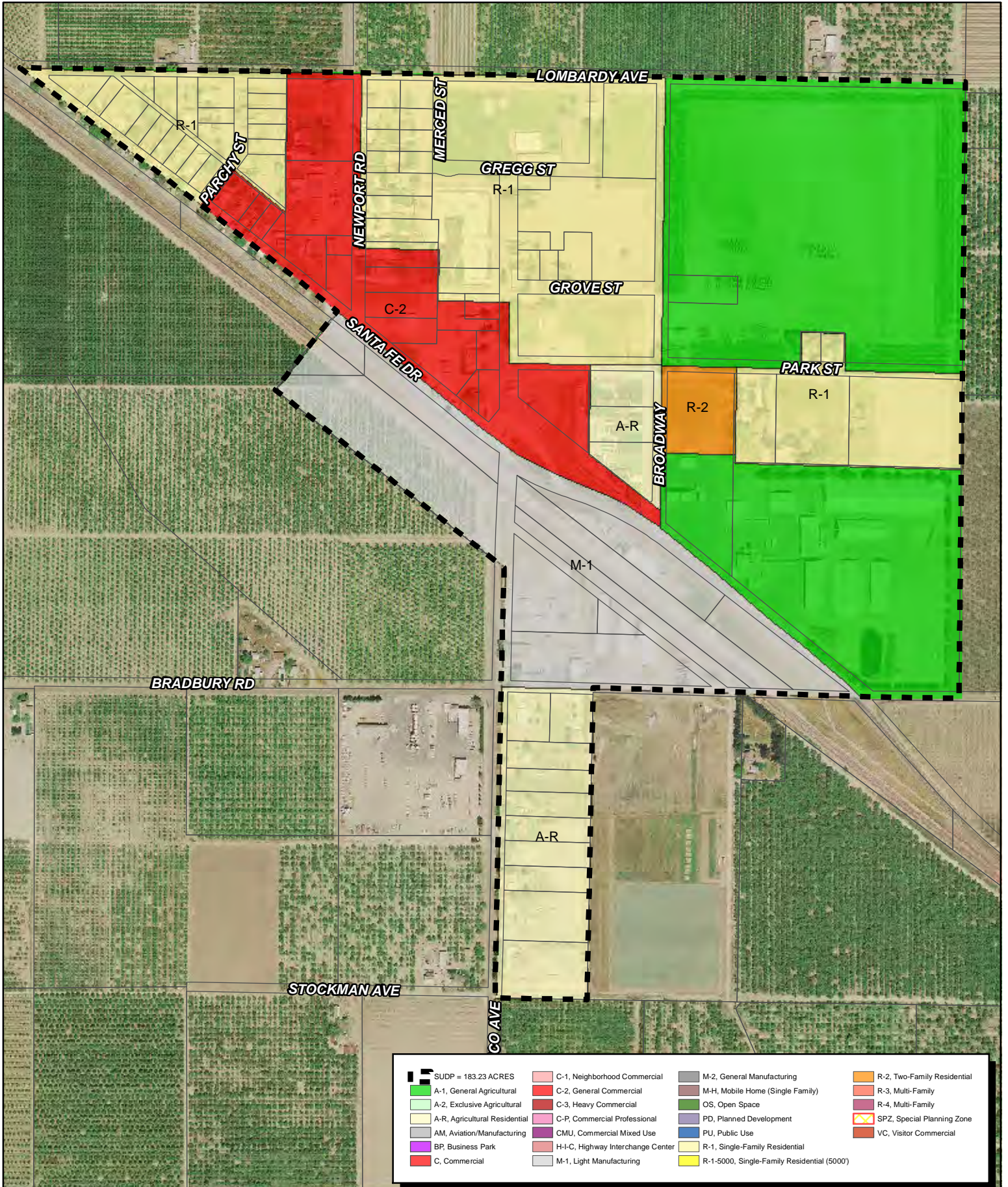


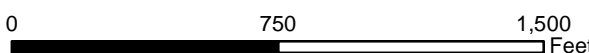
General Plan - Community of Ballico



Zoning - Community of Ballico



SUDP = 183.23 ACRES	C-1, Neighborhood Commercial	M-2, General Manufacturing	R-2, Two-Family Residential
A-1, General Agricultural	C-2, General Commercial	M-H, Mobile Home (Single Family)	R-3, Multi-Family
A-2, Exclusive Agricultural	C-3, Heavy Commercial	OS, Open Space	R-4, Multi-Family
A-R, Agricultural Residential	C-P, Commercial Professional	PD, Planned Development	SPZ, Special Planning Zone
AM, Aviation/Manufacturing	CMU, Commercial Mixed Use	PU, Public Use	VC, Visitor Commercial
BP, Business Park	H-I-C, Highway Interchange Center	R-1, Single-Family Residential	
C, Commercial	M-1, Light Manufacturing	R-1-5000, Single-Family Residential (5000')	



PRODUCED BY MERCED COUNTY PLANNING AND COMMUNITY DEVELOPMENT DEPARTMENT
 Disclaimer: The information displayed on this map is for reference purposes only. Any questions regarding this map should be directed to the Merced County Planning & Community Development Department.